



# TR+SK ANGUS

*Annual Production Sale*

**Tuesday, April 16, 2024**

**2:00 PM MT - PHILIP (SD) LIVESTOCK, LLC**

[www.TPAngus.com](http://www.TPAngus.com)



# Welcome

FRIENDS AND CATTLEMEN!

As always a giant thank you to our customers! We can't do this without you! Just reading this and showing interest in our passionate cow program means a great deal to us here at Trask Family Angus!

As always our primary focus is maintaining a rough country functional cowherd while producing sought after feeder cattle. In an ever changing beef market quality seems to pay large dividends to the cow calf producers as they market their calves.

Finding bulls to use that maintain great cowherds and produce premium feeder cattle is no easy feat. We spend countless hours studying pedigrees and epds that will do this to the best of our ability. We'd love the opportunity to discuss how all this impacts our cow herd and the genetics we're providing to others! Whether it's over the phone or a ranch tour the invite is always open!

Navigating the bull market can seem daunting with so many choices and costs! We believe in forward movement of all traits of merit not single traits. Focusing on the balance like this we believe is critical to maintain longevity in cows whether it be fertility, feet, legs or bags all while still offering calves that qualify for different beef quality programs such as Certified Angus Beef or Top Dollar. You'll find a majority of our seedstock qualify for one or both of these programs. If selling your calves for a premium interests you let's visit!

What a blessing to be involved in and surrounded by full time agriculture! I can't think of a better environment to raise a family in! Thanks again! We hope to hear from you and see you at our sale April 16th in Philip, SD.

Evan Anderson  
and the whole crew at Trask Family Angus

Todd & Samra Trask (605) 685-8600  
Tyler Trask (605) 685-5264  
Evan & Jaymie Anderson (605) 545-3795  
Tristan Graham 307-340-2553

[www.TPAngus.com](http://www.TPAngus.com)



## Tuesday, April 16, 2024

**Sale Time: 2:00 p.m. MT**  
**Philip (SD) Livestock Auction**

**Sale Day Phone: (605) 859-2577**



**Auctioneer:**  
Lynn Weishaar  
605-866-4670

### SALE DAY REPRESENTATIVES:

Don Ravellette, RPI Promotions .....(605) 685-5147  
Beau Ravellette, RPI Promotions .....(605) 685-8155  
Dan Piroutek, Tri-State Livestock News .....(605) 544-3316  
Rod Geppert, American Angus Association.....(605) 295-3673  
Vern Frey, Frey Livestock Sales & Service, Inc. ..(701) 721-0344  
Scott Dirk, Tri-State Livestock News .....(605) 380-6024  
Ryan Casteel, The Cattle Business Weekly.....(605) 423-6000

### SIGHT UNSEEN PURCHASE:

A satisfaction guaranteed, sight unseen, purchase plan available for buyers unable to attend. Contact Todd to discuss your individual needs.

### BULLS:

The bulls will be in Philip, SD, April 17, 2023, ready for your inspection.

### AIRPORT INFORMATION:

Philip has a paved airport runway east of town. Please call Todd or sale day phone if you need transportation to and from the airport.

### MOTEL:

Motel West, Philip, SD .....(605) 859-2546

### VIDEOS OF BULLS:

Videos of the bulls are available on DVAuction.com or TPAngus.com

# Sale Day Information

**TERMS & CONDITIONS** – All cattle sell fully guaranteed and under the terms and conditions of the American Angus Association.

**FIRST BREEDING SEASON GUARANTEE** – Bulls selling for \$3,000 or more are guaranteed for 90 days from the first turnout against breeding injury.

Credit for the amount of purchase price minus \$1,500 will be applied toward the purchase of another bull in next year's sale. Buyer keeps all salvage value. Buyer should notify Trask Angus as soon as possible should injury occur and prior to the injured bull being sold for salvage. We ask that all claims for credit be made known prior to September 1, 2024.

This is not a mortality insurance policy, nor does it cover mismanagement or neglect.

**All bulls selling will be tested  
genetic defect free.**

**RETAINED INTEREST** – We will be retaining a 1/3 interest on all the bulls selling. Selling 2/3 interest and full possession.

**ACCIDENTS & LIABILITIES** – All persons attend the sale at their own risk and the seller and the sales management assume no liability, legal or otherwise, for any accidents occurring in, on, or about the premises.

The buyer must look to the seller for fulfillment of all guarantees and representations made hereunder.

**FREE DELIVERY** – Free delivery of all bulls within a 250-mile radius of Philip, SD or \$100 off if taken home sale day. Will begin to deliver bulls on May 1, 2024.

*Announcements made from the auction block take precedence over any printed material.*

**SALE DAY PHONE:  
(605) 859-2577**

**RAV**  
RAV PRINTING & DESIGN  
**RAV**

Catalog produced by Rav Printing & Design  
Beau & Mary Ravellette • (605) 685-8155  
Philip, South Dakota

This sale will be broadcast live on the internet.

**DVAuction**  
Broadcasting Real-Time Auctions

Real time bidding & proxy bidding available.  
Justin Dikoff 605-290-0635



## AMERICAN ANGUS ASSOCIATION SELECTION TOOLS

**Expected Progeny Difference (EPD)**, is the prediction of how future progeny of each animal are expected to perform relative to the progeny of other animals listed in the database. EPDs are expressed in units of measure for the trait, plus or minus. Interim EPDs may appear on young animals when their performance has yet to be incorporated into the American Angus Association National Cattle Evaluation (NCE) procedures. This EPD will be preceded by an 'I', and may or may not include the animal's own performance record for a particular trait, depending on its availability, appropriate contemporary grouping, or data edits needed for NCE.

**Accuracy (ACC)**, is the reliability that can be placed on the EPD. Accuracy will range from 0 to 1 with an accuracy closer to 1.0 indicating higher reliability. Accuracy is impacted by the amount of information that is included in the analysis including individual genotype and performance records as well as number of progeny and ancestral records.

### PRODUCTION

**Calving Ease Direct (CED)**, expressed as a difference in percentage of unassisted births, with a higher value indicating greater calving ease in first-calf heifers. It predicts the average difference in ease with which a sire's calves will be born when he is bred to first-calf heifers.

**Birth Weight (BW)**, expressed in pounds, is a predictor of a sire's ability to transmit birth weight to his progeny compared to that of other sires.

**Weaning Weight (WW)**, expressed in pounds, is a predictor of a sire's ability to transmit weaning growth to his progeny compared to that of other sires.

**Yearling Weight (YW)**, expressed in pounds, is a predictor of a sire's ability to transmit yearling growth to his progeny compared to that of other sires.

**Residual Average Daily Gain (RADG)**, feed efficiency expressed in pounds per day, is a predictor of a sire's genetic ability for post-weaning gain in future progeny compared to that of other sires, given a constant amount of feed consumed.

**Dry Matter Intake (DMI)**, expressed in pounds per day, is a predictor of difference in transmitting ability for feed intake during the post-weaning phase, compared to that of other sires.

**Yearling Height (YH)**, expressed in inches, is a predictor of a sire's ability to transmit yearling height compared to that of other sires.

**Scrotal Circumference (SC)**, expressed in centimeters, is a predictor of the difference in transmitting scrotal size compared to that of other sires.

### MANAGEMENT

**Claw Set (Claw)**, expressed in units of claw-set score, a lower EPD is more favorable, indicating a sire will produce progeny with more symmetrical, even and appropriately spaced toes compared to another sire.

**Foot Angle (Angle)**, expressed in units of foot-angle score, a lower EPD is more favorable, indicating a sire will produce progeny with an angle closer to 45 degrees at the pastern and appropriate toe length and heel depth compared to another sire.

**Dockity (DOCK)**, expressed as a difference in yearling cattle temperament, with a higher value indicating more favorable dockity in a sire's offspring compared to another sire.

**Pulmonary Arterial Pressure EPD (PAP)**, expressed in millimeters of Mercury (mmHg), with a lower EPD being more favorable indicating a sire should produce progeny with a lower PAP score to decrease the risk of progeny contracting high altitude disease most commonly experienced at 5,500 ft or greater in elevation.

**Hair Shed EPD (HS)**, expressed in units of hair shed score, with a lower EPD being more favorable. This indicates a sire should produce progeny who shed their winter coat earlier in the spring and has improved environmental adaptability in heat stressed areas and grazing endophyte-infected (hot) fescue.

### MATERNAL

**Heifer Pregnancy (HP)**, is a selection tool to increase the probability or chance of a sire's daughters becoming pregnant as first-calf heifers during a normal breeding season. A higher EPD is the more favorable direction, and the EPD is reported in percentage units.

**Calving Ease Maternal (CEM)**, expressed as a difference in percentage of unassisted births, with a higher value indicating greater calving ease in first-calf daughters. It predicts the average ease with which a sire's daughters will calve as first-calf heifers when compared to daughters of other sires.

**Maternal Milk (Milk)**, expressed in pounds of milk weaned, is a predictor of a sire's genetic merit for milk and mothering ability in his daughters. In other words, it is the part of the calf's weaning weight attributes to milk and mothering ability.

**Mature Weight (MW)**, expressed in pounds, is a predictor of the difference in mature weight of daughters of a sire compared to the daughters of other sires.

**Mature Height (MH)**, expressed in inches, is a predictor of the difference in mature height of a sire's daughters compared to daughters of other sires.

### CARCASS

**Carcass Weight (CW)**, expressed in pounds, is a predictor of the differences in hot carcass weight of a sire's progeny compared to progeny of other sires.

**Marbling (Marb)**, expressed as a fraction of the difference in USDA marbling score of a sire's progeny compared to progeny of other sires.

**Ribeye Area (RE)**, expressed in square inches, is a predictor of the difference in ribeye area of a sire's progeny compared to progeny of other sires.

**Fat Thickness EPD (Fat)**, expressed in inches, is a predictor of the differences in external fat thickness at the 12th rib (as measured between the 12th and 13th ribs) of a sire's progeny compared to progeny of other sires.

### SVALUE INDEXES

**SValue Indexes**, expressed in dollars per head, are multi-trait selection indexes where a higher value suggests more profit. The SValue is an estimate of how future progeny of each sire are expected to perform, on average, compared to progeny of other sires if sires were randomly mated to cows and if calves were exposed to the same environment.

**Maternal Weaned Calf Value (SM)**, expressed in dollars per head, predicts profitability differences in progeny due to genetics from conception to weaning by decreasing mature cow size and improving dockity, foot structure and fertility while maintaining weaning weights consistent with today's production.

**Weaned Calf Value (SW)**, expressed in dollars per head, provides the expected difference in future progeny pre-weaning performance from birth to weaning.

**Energy Value (SEK)**, expressed in dollar savings per cow per year with a larger value being more favorable. It assesses differences in cow energy requirements, due to maternal milk and mature cow size.

**Feedlot Value (SF)**, expressed in dollars per head, is the expected average difference in future progeny performance for post-weaning feedlot merit (growth and feed efficiency) compared to progeny of other sires assuming producers retain ownership of cattle through the feedlot phase and sell on a carcass-weight basis.

**Grid Value (SG)**, expressed in dollars per carcass, is the expected average difference in future progeny performance for carcass grid merit, including quality and yield grade attributes, compared to progeny of other sires.

**Beef Value (SB)**, expressed in dollars per carcass, represents the expected average differences in the progeny post-weaning performance and carcass value compared to progeny of other sires. This index assumes commercial producers wean all male and female progeny, retain ownership of these animals through the feedlot and sell on a carcass merit grid.

**Combined Value (SC)**, expressed in dollars per head, which includes all traits that make up both Maternal Weaned Calf Value (SM) and Beef Value (SB) with the objective that commercial producers will replace 20% of their breeding females per year with replacement heifers retained within their own herd. The remaining cull heifer and steer progeny are then assumed to be sent to the feedlot where the producers retain ownership of those cattle and sell them on a quality-based carcass merit grid.

## Driving the science of better breeding

There's little room for error in the cattle business. Producers need the most advanced information to make smart selection decisions, and Angus Genetics Inc. (AGI) provides it through genomic-enhanced expected progeny differences (GE-EPDs).

EPDs that traditionally contained all pedigree, performance and progeny information now also include results from available genomic, or DNA, tests. Breeders who use genomic technology give buyers access to AGI-generated GE-EPDs that provide:

Increased predictability and decreased risk for young and unproven animals due to enhanced accuracy of EPDs

Better characterization of genetics for difficult-to-measure performance traits (such as carcass traits, maternal traits and feed efficiency)

The ability to make more rapid progress for traits that are important to you, due to:

- more accurate selection
- easier identification of genetic outliers
- the ability to propagate young animals with confidence earlier in their lives

In fact, GE-EPDs on unproven animals have the same amount of accuracy as if they have recorded an average of 15 progeny, depending on the trait. That's valuable insight, offered regularly through the breed's weekly national cattle evaluation at [www.angus.org](http://www.angus.org).

How do you know if EPDs are genomic-enhanced?

Ask your breeder, refer to the registration paper, or look for the AGI GE-EPD logo, Angus GS™ powered by partner Neogen or the HD50k by partner Zoetis.





# ABOVE AVERAGE GOALS REQUIRE TARGETED BULLS

---

## *Aim High*

The Targeting the Brand™ logo highlights registered Angus bulls with greater genetic potential to produce calves that meet the most challenging specifications of the *Certified Angus Beef*® brand.

### *Minimum Genetic Requirements*

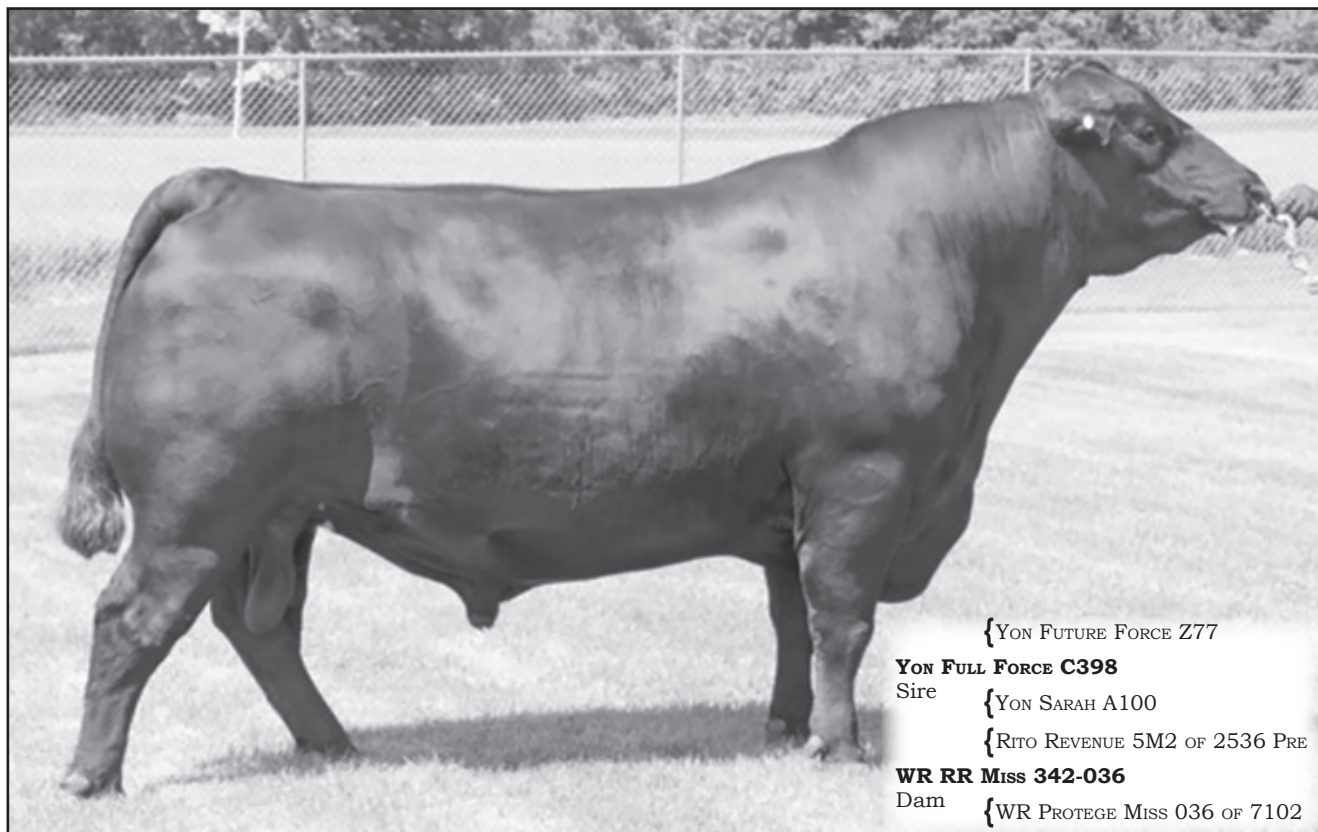
Marbling EPD (Marb)	+0.65
Dollar Grid Carcass Index (\$G)	+55.0

**Only 1 in 4 non-parent Angus bulls qualify.**



For more information on Targeting the Brand™ visit [CABcattle.com](http://CABcattle.com).

# REFERENCE SIRES



{YON FUTURE FORCE Z77  
**YON FULL FORCE C398**  
 Sire {YON SARAH A100  
 {RITO REVENUE 5M2 OF 2536 PRE  
**WR RR Miss 342-036**  
 Dam {WR PROTEGE MISS 036 OF 7102

## WR Full House

BD: 09/12/2018

Reg: \*19414615

CED	BW	WW	YW	SC	CEM	Milk	\$EN	Doc	CW	Marb	RE	Fat	\$M	\$W	\$F	\$G	\$B	\$C
+20	-1.9	+58	+117	+0.38	+19	+40	-6	+26	+50	+1.51	+0.37	+0.057	+92	+69	+98	+90	+188	+336

**Full House is an elite calving ease superstar.**

**Below are the reasons why we chose to use him, along with our results:**

### Why

- In all the traits of merit and EPDs, Full House is in the top 25% of the breed or better in 15 different traits!
- He is in the top 2% of the breed in CED, CEM, MARB, \$M, and \$C!

### Our Results

- Our Full House sire group of bull calves ratioed 102 off the cow at weaning and 101 at yearling in a group of over 45 bulls!
- His calves birth slippery and light.
- They are the right shape and hit the ground with vigor.

Our first set of Full House calves performed spectacularly to say the least! Over and over, the heavy calves at weaning that crossed the scale were Full House sired.

### Conclusion

Full House is a sleep-all-night heifer bull while putting money in your pocket by weaning a heavy set of calves. He does this all while maintaining moderate and attractive phenotype cows. You're more than welcome to stop and look at our Full House offspring; seeing is believing!



# 1 Trask Full House 3014

BD: 2/14/23 Reg: 20852067 Tattoo: 3014

WR FULL HOUSE  
{YON FULL FORCE C398  
{WR RR MISS 342-036

YON FUTURE FORCE Z77  
YON SARAH A100  
RITO REVENUE 5M2 OF 2536 PRE  
WR PROTEGE MISS 036 OF 7102

Birth Wt.  
64  
Adj. WW  
710

HD 50K

{WILKS WAYLON 185  
TRASK TORRIE 1112  
{TRASK TORRIE 416

BALDRIDGE WAYLON W34  
WILKS INF 77R EMPRESS 74  
RITO 1W22 OF RITA 5W17 9M25  
TRASK TORRIE 919



CED	BW	WW	YW	SC	Milk	DOC	CW	Marb
+10	+2.1	+60	+111	+0.30	+38	+31	+48	+0.90

RE	Fat	\$M	\$W	\$F	\$G	\$B	\$C
+0.70	+0.026	+98	+71	+97	+65	+163	+309

Ratified 108 at 205, 111 at 365! Gained 3.38 on test. Great moderate feed efficient cow maker here, Top 1% \$M.



# 2 Trask Full House 3003

BD: 3/17/23 Reg: 20852059 Tattoo: 3003

WR FULL HOUSE  
{YON FULL FORCE C398  
{WR RR MISS 342-036

YON FUTURE FORCE Z77  
YON SARAH A100  
RITO REVENUE 5M2 OF 2536 PRE  
WR PROTEGE MISS 036 OF 7102

Birth Wt.  
77  
Adj. WW  
679

HD 50K

{HERBSTER SERVICEMAN 544  
TRASK EILEEN 839  
{TRASK EILEEN 013

HERBSTER SERVICEMAN 364  
CHERRY OF CONANGA 2475  
CONNELLY 044 062  
TRASK EILEEN 122



CED	BW	WW	YW	SC	Milk	DOC	CW	Marb
+11	+1.4	+54	+104	-0.17	+27	+15	+44	+0.97

RE	Fat	\$M	\$W	\$F	\$G	\$B	\$C
+0.54	+0.028	+59	+50	+94	+67	+161	+268

Top 15% of the Breed for CED, Top 10% for HP, Top 25% for Marb, and \$G. Dam is a 544 Daughter, Serviceman 544 produced a ton of great cows for us.

# 4 Trask Full House 3025

BD: 3/19/23 Reg: 20852074 Tattoo: 3025

WR FULL HOUSE  
{YON FULL FORCE C398  
{WR RR MISS 342-036

YON FUTURE FORCE Z77  
YON SARAH A100  
RITO REVENUE 5M2 OF 2536 PRE  
WR PROTEGE MISS 036 OF 7102

Birth Wt.  
78  
Adj. WW  
697

HD 50K

{RAFTER Q FA 016H  
TRASK PROUD LASSIE  
{TRASK PROUD LASSIE 039

S A V FINAL ANSWER 0035  
LC DAISY 526H  
S A V FINAL ANSWER 0035  
TRASK PROUD LASSIE 858



CED	BW	WW	YW	SC	Milk	DOC	CW	Marb
+8	+3.8	+80	+150	+1.33	+27	+23	+71	+0.82

RE	Fat	\$M	\$W	\$F	\$G	\$B	\$C
+0.51	+0.057	+59	+61	+110	+56	+167	+276

Ratified 101 at 205, 109 at 365. Boosts an impressive 3.47 pounds gain on test. Lots of grow here Top 5% in the breed for YW.

# 3 Trask Full House 3023

BD: 2/12/23 Reg: 20852072 Tattoo: 3023

WR FULL HOUSE  
{YON FULL FORCE C398  
{WR RR MISS 342-036

YON FUTURE FORCE Z77  
YON SARAH A100  
RITO REVENUE 5M2 OF 2536 PRE  
WR PROTEGE MISS 036 OF 7102

Birth Wt.  
57  
Adj. WW  
662

HD 50K

{COLEMAN BRAVO 6313  
TRASK QUEEN LOIS 1065  
{TRASK QUEEN LOIS 970

COLEMAN CHARLO 0256  
COLEMAN DONNA 714  
HERBSTER SERVICEMAN 544  
TRASK 627



CED	BW	WW	YW	SC	Milk	DOC	CW	Marb
+17	-1.0	+58	+104	+0.13	+31	+17	+37	+0.99

RE	Fat	\$M	\$W	\$F	\$G	\$B	\$C
+0.43	+0.019	+94	+69	+71	+67	+138	+273

Top 1% in the breed for CED. +6 \$EN! Feed Efficient Deluxe Cow Maker.

# 5 Trask Full House 3029

BD: 3/19/23 Reg: 20852078 Tattoo: 3029

WR FULL HOUSE  
{YON FULL FORCE C398  
{WR RR MISS 342-036

YON FUTURE FORCE Z77  
YON SARAH A100  
RITO REVENUE 5M2 OF 2536 PRE  
WR PROTEGE MISS 036 OF 7102

Birth Wt.  
78  
Adj. WW  
685

HD 50K

{HERBSTER SERVICEMAN 544  
TRASK PROUD LASSIE 852  
{TRASK PROUD LASSIE 452

HERBSTER SERVICEMAN 364  
CHERRY OF CONANGA 2475  
RITO 919 OF RITA 5F56 616  
TRASK PROUD LASSIE 820



CED	BW	WW	YW	SC	Milk	DOC	CW	Marb
+12	-1.1	+54	+101	+0.43	+34	+27	+34	+1.17

RE	Fat	\$M	\$W	\$F	\$G	\$B	\$C
+0.68	+0.031	+78	+65	+84	+78	+162	+288

Actual weight 737 pounds at 229 days. A great performer in pasture and feedlot!



**6**

## Trask Full House 3012

BD: 2/12/23

Reg: 20852066

Tattoo: 3012

{YON FULL FORCE C398  
WR FULL HOUSE  
{WR RR MISS 342-036

YON FUTURE FORCE Z77  
YON SARAH A100  
RITO REVENUE 5M2 OF 2536 PRE  
WR PROTEGE MISS 036 OF 7102

Birth Wt.  
58  
Adj. WW  
737

HD 50K

{WILKS WAYLON 51  
TRASK QUEEN LOIS 1026  
{TRASK QUEEN LOIS 449

BALDRIDGE WAYLON W34  
5175 20 MISSIE 64  
RITO 919 OF RITA 5F56 616  
TRSAK QUEEN LOIS 143



CED	BW	WW	YW	SC	Milk	DOC	CW	Marb
+10	+2.5	+67	+121	+1.06	+29	+17	+53	+0.88

RE	Fat	\$M	\$W	\$F	\$G	\$B	\$C
+0.55	+0.034	+73	+65	+92	+62	+154	+273

Ratioed 113 at 205, 107 at 365! Lots of GROW here! Great all Around Bull.

**7**

## Trask Full House 3032

BD: 2/9/23

Reg: 20852083

Tattoo: 3032

{YON FULL FORCE C398  
WR FULL HOUSE  
{WR RR MISS 342-036

YON FUTURE FORCE Z77  
YON SARAH A100  
RITO REVENUE 5M2 OF 2536 PRE  
WR PROTEGE MISS 036 OF 7102

Birth Wt.  
62  
Adj. WW  
614

HD 50K

{TRASK SURE SHOT 532  
TRASK EMMA 1154  
{TRASK CONSENSUS 677

MOGCK SURE SHOT  
TRASK PRIDE 765  
WILKS WAYLON 81  
TRASK CONSENSUS



CED	BW	WW	YW	SC	Milk	DOC	CW	Marb
+16	-1.1	+55	+100	+0.74	+30	+22	+43	+1.10

RE	Fat	\$M	\$W	\$F	\$G	\$B	\$C
+0.84	+0.029	+79	+64	+94	+77	+171	+301

Another slippery heifer bull. Top 2% in the breed for CED, Top 10% \$EN, Top 15% \$M, \$G, \$C.

**8**

## Trask Full House 3034

BD: 2/14/23

Reg: 20852085

Tattoo: 3034

{YON FULL FORCE C398  
WR FULL HOUSE  
{WR RR MISS 342-036

YON FUTURE FORCE Z77  
YON SARAH A100  
RITO REVENUE 5M2 OF 2536 PRE  
WR PROTEGE MISS 036 OF 7102

Birth Wt.  
67  
Adj. WW  
717

HD 50K

{HERBSTER SERVICEMAN 544  
TRASK TORRIE 1078  
{TRASK TORRIE 616

HERBSTER SERVICEMAN 364  
CHERRY OF CONANGA 2475  
STEVENSON RAINMAKER 1162  
TRASK TORRIE 915



CED	BW	WW	YW	SC	Milk	DOC	CW	Marb
+10	+1.9	+66	+125	+0.82	+30	+19	+58	+1.00

RE	Fat	\$M	\$W	\$F	\$G	\$B	\$C
+0.49	+0.059	+66	+63	+102	+65	+167	+283

Actual weight 753 pounds at 262 days. Ratioed 109 at 205, 102 at 365. Dam is another impressive 544 daughter with plenty of grow.

**9**

## Trask Full House 3036

BD: 3/21/23

Reg: 20852087

Tattoo: 3036

{YON FULL FORCE C398  
WR FULL HOUSE  
{WR RR MISS 342-036

YON FUTURE FORCE Z77  
YON SARAH A100  
RITO REVENUE 5M2 OF 2536 PRE  
WR PROTEGE MISS 036 OF 7102

Birth Wt.  
81  
Adj. WW  
707

HD 50K

{WILKS WAYLON 81  
TRASK FLORA 779  
{TRASK FLORA 456

BALDRIDGE WAYLON W34  
WILKS INF 77R ROSEBUD 106  
RITO 919 OF RITA 5F56 616  
TRASK FLORA 761



CED	BW	WW	YW	SC	Milk	DOC	CW	Marb
+12	-0.2	+50	+97	+0.03	+32	+20	+39	+0.88

RE	Fat	\$M	\$W	\$F	\$G	\$B	\$C
+0.53	+0.021	+77	+57	+88	+62	+150	+272

Actual weight 757 pounds at 227 days! Top 1% in the breed for CEM, Top 20% \$M.

**10**

## Trask Full House 3041

BD: 3/15/23

Reg: 20852299

Tattoo: 3041

{YON FULL FORCE C398  
WR FULL HOUSE  
{WR RR MISS 342-036

YON FUTURE FORCE Z77  
YON SARAH A100  
RITO REVENUE 5M2 OF 2536 PRE  
WR PROTEGE MISS 036 OF 7102

Birth Wt.  
71  
Adj. WW  
675

HD 50K

{HERBSTER SERVICEMAN 544  
TRASK QUEEN LOIS 895  
{TRASK QUEEN LOIS 214

HERBSTER SERVICEMAN 364  
CHERRY OF CONANGA 2475  
CONNELLY 044 062  
TRASK QUEEN LOIS 711



CED	BW	WW	YW	SC	Milk	DOC	CW	Marb
+14	-0.8	+51	+97	+1.67	+38	+18	+21	+1.20

RE	Fat	\$M	\$W	\$F	\$G	\$B	\$C
+0.25	+0.032	+85	+67	+51	+74	+125	+247

Top 4% in the breed for CED, Top 10% SC, \$EN, Marb, and \$M.



**11****Trask Full House 3018**

BD: 3/16/23 Reg: 20852068 Tattoo: 3018

{YON FULL FORCE C398  
WR FULL HOUSE  
{WR RR MISS 342-036

HD 50K

{HERBSTER SERVICEMAN 544  
TRASK PROUD LASSIE 893  
{TRASK PROUD LASSIE

YON FUTURE FORCE Z77  
YON SARAH A100  
RITO REVENUE 5M2 OF 2536 PRE  
WR PROTEGE MISS 036 OF 7102

HERBSTER SERVICEMAN 364  
CHERRY OF CONANGA 2475  
CONNELY CONSENSUS 578B  
TRASK PROUD LASSIE 121

Birth Wt.  
72  
Adj. WW  
800



CED	BW	WW	YW	SC	Milk	DOC	CW	Marb
+13	+0.0	+66	+114	-0.22	+32	+29	+46	+1.12

RE	Fat	\$M	\$W	\$F	\$G	\$B	\$C
+0.25	+0.052	+82	+74	+77	+68	+145	+270

869 pound actual weight at 232 days!! This bull is backed by a powerful 544 daughter.

**12****Trask Full House 3042**

BD: 2/10/23 Reg: 20852300 Tattoo: 3042

{YON FULL FORCE C398  
WR FULL HOUSE  
{WR RR MISS 342-036

HD 50K

{TRASK RAINMAKER 521  
TRASK JAYMIE 1116  
{TRASK JAYMIE 532

YON FUTURE FORCE Z77  
YON SARAH A100  
RITO REVENUE 5M2 OF 2536 PRE  
WR PROTEGE MISS 036 OF 7102

STEVENSON RAINMAKER 1162  
TRASK PROUD LASSIE 949  
MOGCK SURE SHOT  
TRASK JAYMIE 108

Birth Wt.  
60  
Adj. WW  
622



CED	BW	WW	YW	SC	Milk	DOC	CW	Marb
+13	+0.1	+52	+90	-0.19	+26	+26	+30	+0.89

RE	Fat	\$M	\$W	\$F	\$G	\$B	\$C
+0.30	+0.016	+69	+56	+71	+60	+131	+239

Top 10% in the breed for CED, CEM. Top 15% \$EN.

**13****Trask Full House 3046**

BD: 2/15/23 Reg: 20852303 Tattoo: 3046

{YON FULL FORCE C398  
WR FULL HOUSE  
{WR RR MISS 342-036

HD 50K

{S A V RAINFALL 6846  
TRASK GEORGEANNA 1070  
{TRASK GEORGEANNA 743

YON FUTURE FORCE Z77  
YON SARAH A100  
RITO REVENUE 5M2 OF 2536 PRE  
WR PROTEGE MISS 036 OF 7102

COLEMAN CHARLO 0256  
S A V BLACKCAP MAY 4136  
V A R GENERATION 2100  
TRASK GEORGEANNA 814

Birth Wt.  
72  
Adj. WW  
666



CED	BW	WW	YW	SC	Milk	DOC	CW	Marb
+14	+1.3	+68	+124	+0.02	+34	+20	+50	+0.69

RE	Fat	\$M	\$W	\$F	\$G	\$B	\$C
+0.83	+0.034	+93	+75	+91	+56	+146	+282

Ratioed 102 at 205, 103 at 365. A GREAT balance of maternal and carcass in this bull!

**14****Trask Full House 3053**

BD: 3/13/23 Reg: 20852308 Tattoo: 3053

{YON FULL FORCE C398  
WR FULL HOUSE  
{WR RR MISS 342-036

HD 50K

{MOGCK SURE SHOT  
TRASK TILLIE  
{TRASK TILLIE 533

YON FUTURE FORCE Z77  
YON SARAH A100  
RITO REVENUE 5M2 OF 2536 PRE  
WR PROTEGE MISS 036 OF 7102

MYTTY IN FOCUS  
MOGCK BLACK LASS 2065  
G A R ENHANCER 5365  
TRASK TILLIE 901

Birth Wt.  
75  
Adj. WW  
608



CED	BW	WW	YW	SC	Milk	DOC	CW	Marb
+5	+1.4	+55	+105	+0.58	+32	+10	+38	+0.84

RE	Fat	\$M	\$W	\$F	\$G	\$B	\$C
+0.50	+0.016	+42	+56	+87	+60	+147	+233

Grow Grow Grow Gained 3.91 on test. Ratioed 108 at 365.

**15****Trask Full House 3058**

BD: 2/11/23 Reg: 20852310 Tattoo: 3058

{YON FULL FORCE C398  
WR FULL HOUSE  
{WR RR MISS 342-036

HD 50K

{S A V RAINFALL 6846  
TRASK BLACK BELLE 1081  
{TRASK BLACK BELLE 953

YON FUTURE FORCE Z77  
YON SARAH A100  
RITO REVENUE 5M2 OF 2536 PRE  
WR PROTEGE MISS 036 OF 7102

COLEMAN CHARLO 0256  
S A V BLACKCAP MAY 4136  
HOOVER ELATION M123  
TRASK BLACK BELLE 746

Birth Wt.  
57  
Adj. WW  
639



CED	BW	WW	YW	SC	Milk	DOC	CW	Marb
+21	-4.0	+43	+98	-0.10	+34	+22	+31	+1.47

RE	Fat	\$M	\$W	\$F	\$G	\$B	\$C
+0.05	+0.089	+77	+55	+78	+81	+159	+283

Sleep all night and all day heifer bull!



**16**

**Trask Full House 3064**

BD: 3/18/23

Reg: 20852315

Tattoo: 3064

{YON FULL FORCE C398  
WR FULL HOUSE  
{WR RR MISS 342-036

YON FUTURE FORCE Z77  
YON SARAH A100  
RITO REVENUE 5M2 OF 2536 PRE  
WR PROTEGE MISS 036 OF 7102

Birth Wt.  
72  
Adj. WW  
683

HD 50K

{CONNEALY CONSENSUS 578B  
TRASK MS BLACKWOOD 629  
{TRASK MS BLACKWOOD 404

CONNEALY CONSENSUS  
POWSA OF CONANGA 687 7567  
G A R NEW DESIGN 5050  
TRASK MS BLACKWOOD 549



CED	BW	WW	YW	SC	Milk	DOC	CW	Marb
+13	+0.2	+57	+107	-0.06	+34	+25	+40	+1.19

RE	Fat	\$M	\$W	\$F	\$G	\$B	\$C
+0.72	+0.029	+73	+63	+84	+80	+164	+286

Actual weight 737 pounds at 230 days. Dam is sired by 578b (Consensus son), we have a tremendous amount of great cows sired by 578b that have lasted the test of time in our harsh environment.

**17**

**Trask Full House 3059**

BD: 2/8/23

Reg: 20852311

Tattoo: 3059

{YON FULL FORCE C398  
WR FULL HOUSE  
{WR RR MISS 342-036

YON FUTURE FORCE Z77  
YON SARAH A100  
RITO REVENUE 5M2 OF 2536 PRE  
WR PROTEGE MISS 036 OF 7102

Birth Wt.  
63  
Adj. WW  
595

HD 50K

{WILKS WAYLON 198  
TRASK ANITA 1018  
{TRASK ANITA 515

BALDRIDGE WAYLON W34  
WILKS BANDO ELLUNA 46  
RITO 1W22 OF RITA 5W17 9M25  
TRASK ANITA 958



CED	BW	WW	YW	SC	Milk	DOC	CW	Marb
+15	-0.3	+54	+114	+0.42	+33	+15	+43	+1.38

RE	Fat	\$M	\$W	\$F	\$G	\$B	\$C
+0.58	+0.063	+66	+56	+98	+85	+183	+303

Heifer bull here. Top 3% in the breed for CED. Top 10% HP, CED, \$G.

**18**

**Trask Full House 3063**

BD: 2/17/23

Reg: 20852314

Tattoo: 3063

{YON FULL FORCE C398  
WR FULL HOUSE  
{WR RR MISS 342-036

YON FUTURE FORCE Z77  
YON SARAH A100  
RITO REVENUE 5M2 OF 2536 PRE  
WR PROTEGE MISS 036 OF 7102

Birth Wt.  
69  
Adj. WW  
688

HD 50K

{FAST/STROMN PAYWEIGHT 845  
TRASK MS BLACKBELL 1012  
{TRASK MS BLACKBELL 962

BASIN PAYWEIGHT 1682  
FAST ERICA ALT 24  
K C F BENNETT THEROCK A473  
TRASK MS BLACKBELL 761



CED	BW	WW	YW	SC	Milk	DOC	CW	Marb
+9	+2.5	+82	+148	+1.21	+36	+14	+81	+1.04

RE	Fat	\$M	\$W	\$F	\$G	\$B	\$C
+0.67	+0.043	+80	+83	+124	+71	+194	+332

Highest \$C Bull in the sale!

**19**

**Trask Full House 3066**

BD: 3/18/23

Reg: 20852317

Tattoo: 3066

{YON FULL FORCE C398  
WR FULL HOUSE  
{WR RR MISS 342-036

YON FUTURE FORCE Z77  
YON SARAH A100  
RITO REVENUE 5M2 OF 2536 PRE  
WR PROTEGE MISS 036 OF 7102

Birth Wt.  
74  
Adj. WW  
663

HD 50K

{V A R GENERATION 2100  
TRASK AMANDA 870  
{TRASK AMANDA 442

CONNEALY CONSENSUS 7229  
SANDPOINT BLACKBIRD 8809  
RITO 12E7 OF 5F56 RITO 5M2  
TRASK AMANDA 836



CED	BW	WW	YW	SC	Milk	DOC	CW	Marb
+14	+0.1	+56	+104	+0.52	+32	+21	+45	+1.00

RE	Fat	\$M	\$W	\$F	\$G	\$B	\$C
+0.60	-0.009	+71	+62	+94	+72	+166	+286

Great Pedigree here, The Dam is a VAR Generation 2100 daughter. Great Balance of EPDs.

**20**

**Trask Full House 3076**

BD: 3/19/23

Reg: 20852325

Tattoo: 3076

{YON FULL FORCE C398  
WR FULL HOUSE  
{WR RR MISS 342-036

YON FUTURE FORCE Z77  
YON SARAH A100  
RITO REVENUE 5M2 OF 2536 PRE  
WR PROTEGE MISS 036 OF 7102

Birth Wt.  
88  
Adj. WW  
682

HD 50K

{RITO 12E7 OF 5F56 RITO 5M2  
TRASK SAMMIE 473  
{TRASK SAMMIE 557

RITO REVENUE 5M2 OF 2536 PRE  
RITA 5F56 OF 1198 FD  
CONNEALY TIMELINE  
TRASK SAMMIE 364



CED	BW	WW	YW	SC	Milk	DOC	CW	Marb
+5	+3.2	+65	+117	+0.37	+31	+16	+45	+0.96

RE	Fat	\$M	\$W	\$F	\$G	\$B	\$C
+0.56	-0.009	+75	+63	+86	+69	+156	+277

Good all around cow bull. Top 25% in the breed for \$M and \$C. Dam is out of Rito 12e7, in our experience 12e7 cows bring in heavy calves in the fall! 3076 actual weight was 733 pounds at 229 days.



**21****Trask Full House 3067**

BD: 3/22/23 Reg: 20852318 Tattoo: 3067

{YON FULL FORCE C398  
WR FULL HOUSE  
{WR RR MISS 342-036

HD 50K

{RITO 12E7 OF 5F56 RITO 5M2  
TRASK MS BLACKWOOD 833  
{TRASK MS BLACKWOOD 419

YON FUTURE FORCE Z77  
YON SARAH A100  
RITO REVENUE 5M2 OF 2536 PRE  
WR PROTEGE MISS 036 OF 7102

Birth Wt.  
81  
Adj. WW  
754

RITO REVENUE 5M2 OF 2536 PRE  
RITA 5F56 OF 1198 FD  
RITO 1W22 OF RITA 5W17 9M25  
TRASK MS BLACKWOOD 771



CED	BW	WW	YW	SC	Milk	DOC	CW	Marb
+8	+1.7	+65	+121	+0.40	+29	+25	+54	+0.90

RE	Fat	\$M	\$W	\$F	\$G	\$B	\$C
+0.39	+0.038	+73	+65	+100	+60	+160	+281

Impressive Grow! Actual weight 805 pounds at 226 days. Ratioed 110 at 205.

**21****22****Trask Full House 3077**

BD: 2/16/23 Reg: 20852326 Tattoo: 3077

{YON FULL FORCE C398  
WR FULL HOUSE  
{WR RR MISS 342-036

HD 50K

{S A V RAINFALL 6846  
ANDERSON PROUD LASSIE 1025  
{TRASK PROUD LASSIE 229

YON FUTURE FORCE Z77  
YON SARAH A100  
RITO REVENUE 5M2 OF 2536 PRE  
WR PROTEGE MISS 036 OF 7102

Birth Wt.  
58  
Adj. WW  
603

COLEMAN CHARLO 0256  
S A V BLACKCAP MAY 4136  
TRASK NEW DESIGN 658  
TRASK PROUD LASSIE 949



CED	BW	WW	YW	SC	Milk	DOC	CW	Marb
+20	-4.3	+44	+86	+0.35	+33	+16	+31	+1.14

RE	Fat	\$M	\$W	\$F	\$G	\$B	\$C
+0.47	+0.051	+85	+59	+85	+72	+158	+290

Elite Full Package Heifer Bull! Top 1% in the Breed for CED, BW and CEM. +11 \$EN! You'll drive your wheels off looking for another heifer bull like this one!

**24****Trask Full House 3084**

BD: 2/14/23 Reg: 20852331 Tattoo: 3084

{YON FULL FORCE C398  
WR FULL HOUSE  
{WR RR MISS 342-036

HD 50K

{S A V RAINFALL 6846  
ANDERSON QUEEN LOIS 1036  
{TRASK QUEEN LOIS 520

YON FUTURE FORCE Z77  
YON SARAH A100  
RITO REVENUE 5M2 OF 2536 PRE  
WR PROTEGE MISS 036 OF 7102

Birth Wt.  
53  
Adj. WW  
664

COLEMAN CHARLO 0256  
S A V BLACKCAP MAY 4136  
RITO 919 OF RITA 5F56 616  
TRASK

CED	BW	WW	YW	SC	Milk	DOC	CW	Marb
+20	-1.9	+62	+122	+0.56	+37	+13	+52	+0.70

RE	Fat	\$M	\$W	\$F	\$G	\$B	\$C
+0.47	+0.057	+77	+72	+98	+49	+147	+268

Super calving ease here! Backed by a great pedigree and balanced EPDs

**23****Trask Full House 3081**

BD: 3/19/23 Reg: 20852329 Tattoo: 3081

{YON FULL FORCE C398  
WR FULL HOUSE  
{WR RR MISS 342-036

HD 50K

{HERBSTER SERVICEMAN 544  
TRASK MACKENZIE 865  
{TRASK MACKENZIE

YON FUTURE FORCE Z77  
YON SARAH A100  
RITO REVENUE 5M2 OF 2536 PRE  
WR PROTEGE MISS 036 OF 7102

Birth Wt.  
83  
Adj. WW  
732

HERBSTER SERVICEMAN 364  
CHERRY OF CONANGA 2475  
S A V PROVIDENCE 6922  
TRASK MACKENZIE 556



CED	BW	WW	YW	SC	Milk	DOC	CW	Marb
+8	+1.2	+62	+117	+0.80	+40	+23	+54	+1.26

RE	Fat	\$M	\$W	\$F	\$G	\$B	\$C
+0.24	+0.056	+67	+69	+97	+75	+172	+290

Outstanding Grow! Actual weight 788 pounds at 229 days. Dam is another daughter to our great serviceman 544.

**25****Trask Full House 3087**

BD: 3/16/23 Reg: 20852332 Tattoo: 3087

{YON FULL FORCE C398  
WR FULL HOUSE  
{WR RR MISS 342-036

HD 50K

{HERBSTER SERVICEMAN 544  
TRASK PRINCESS 827  
{TRASK PRINCESS 148

YON FUTURE FORCE Z77  
YON SARAH A100  
RITO REVENUE 5M2 OF 2536 PRE  
WR PROTEGE MISS 036 OF 7102

Birth Wt.  
69  
Adj. WW  
650

HERBSTER SERVICEMAN 364  
CHERRY OF CONANGA 2475  
CONNELLY IMPRESSION  
TRASK PRINCESS 608

CED	BW	WW	YW	SC	Milk	DOC	CW	Marb
+19	-1.9	+44	+94	+1.07	+42	+14	+36	+0.81

RE	Fat	\$M	\$W	\$F	\$G	\$B	\$C
+0.27	+0.065	+81	+63	+82	+52	+134	+255

Another super slippery heifer bull! +8 \$EN!



## 26 Trask Full House 3083

BD: 3/13/23 Reg: 20852330 Tattoo: 3083

{YON FULL FORCE C398  
WR FULL HOUSE  
{WR RR MISS 342-036

YON FUTURE FORCE Z77  
YON SARAH A100  
RITO REVENUE 5M2 OF 2536 PRE  
WR PROTEGE MISS 036 OF 7102

Birth Wt. 67  
Adj. WW 711

HD 50K  
{WILKS WAYLON 51  
TRASK MS BLACKBELL 637  
{TRASK MS

BALDRIDGE WAYLON W34  
5175 20 MISSIE 64  
S A V FINAL ANSWER 0035  
TRASK MS BLACKBELL 107

CED	BW	WW	YW	SC	Milk	DOC	CW	Marb
+10	+0.3	+59	+112	+0.40	+32	+20	+39	+0.68

RE	Fat	\$M	\$W	\$F	\$G	\$B	\$C
+0.55	+0.041	+50	+62	+85	+51	+136	+226

Actual weight 779 pounds at 235 days. Another solid Full House son.

## 27 Trask Full House 3094

BD: 3/13/23 Reg: 20852336 Tattoo: 3094

{YON FULL FORCE C398  
WR FULL HOUSE  
{WR RR MISS 342-036

YON FUTURE FORCE Z77  
YON SARAH A100  
RITO REVENUE 5M2 OF 2536 PRE  
WR PROTEGE MISS 036 OF 7102

Birth Wt. 60  
Adj. WW 692

HD 50K  
{INGRAM CHARCOAL 7001  
TRASK EILEEN 063  
{TRASK EILEEN 874

COLEMAN CHARLO 0256  
COLEMAN DONNA 506  
HERBSTER SERVICEMAN 544  
TRASK EILEEN

CED	BW	WW	YW	SC	Milk	DOC	CW	Marb
+16	-2.8	+56	+109	-0.12	+34	+27	+48	+0.95

RE	Fat	\$M	\$W	\$F	\$G	\$B	\$C
+0.69	+0.037	+95	+68	+96	+67	+162	+305

A very complete package heifer bull! Pedigree, EPDs and POUNDS. You get it all with this guy! Ratioed 106 at 205, 103 at 365.

## 28 Trask Full House 3095

BD: 3/19/23 Reg: 20852337 Tattoo: 3095

{YON FULL FORCE C398  
WR FULL HOUSE  
{WR RR MISS 342-036

YON FUTURE FORCE Z77  
YON SARAH A100  
RITO REVENUE 5M2 OF 2536 PRE  
WR PROTEGE MISS 036 OF 7102

Birth Wt. 88  
Adj. WW 789

HD 50K  
{RITO 12E7 OF 5F56 RITO 5M2  
TRASK PROUD LASSIE 472  
{TRASK PROUD LASSIE 749

RITO REVENUE 5M2 OF 2536 PRE  
RITA 5F56 OF 1198 FD  
G A R EXPECTATION 6901  
TRASK PROUD LASSIE 135

CED	BW	WW	YW	SC	Milk	DOC	CW	Marb
+8	+2.9	+73	+140	+0.94	+36	+30	+63	+1.00

RE	Fat	\$M	\$W	\$F	\$G	\$B	\$C
+0.56	+0.016	+66	+68	+98	+69	+167	+283

This Bull packs a punch! Actual weight 849 pounds at 229 days! Ratioed 115 at 205, 109 at 365. Backed By a powerful cow sired by Rito 12e7. In our experience 12e7 means heavy weaning weight, Great Cow Bull!!!

## 29 Trask Full House 3096

BD: 2/16/23 Reg: 20852338 Tattoo: 3096

{YON FULL FORCE C398  
WR FULL HOUSE  
{WR RR MISS 342-036

YON FUTURE FORCE Z77  
YON SARAH A100  
RITO REVENUE 5M2 OF 2536 PRE  
WR PROTEGE MISS 036 OF 7102

Birth Wt. 63  
Adj. WW 589

HD 50K  
{TRASK SURE SHOT 532  
TRASK TORRIE 1151  
{TRASK TORRIE 546

MOGCK SURE SHOT  
TRASK PRIDE 765  
CONNELLY CAPITALIST 028  
TRASK TORRIE 915

CED	BW	WW	YW	SC	Milk	DOC	CW	Marb
+16	-0.1	+64	+112	+0.57	+24	+20	+53	+1.16

RE	Fat	\$M	\$W	\$F	\$G	\$B	\$C
+0.60	+0.063	+72	+66	+101	+74	+175	+299

Another slippery heifer bull, Top 2% in the Breed CED.

## 30 Trask Full House 3099

BD: 2/21/23 Reg: 20852339 Tattoo: 3099

{YON FULL FORCE C398  
WR FULL HOUSE  
{WR RR MISS 342-036

YON FUTURE FORCE Z77  
YON SARAH A100  
RITO REVENUE 5M2 OF 2536 PRE  
WR PROTEGE MISS 036 OF 7102

Birth Wt. 70  
Adj. WW 731

HD 50K  
{HERBSTER SERVICEMAN 544  
TRASK MS BLACKWOOD 1040  
{TRASK MS BLACKWOOD

HERBSTER SERVICEMAN 364  
CHERRY OF CONANGA 2475  
CONNELLY IMPRESSION  
TRASK MS BLACKWOOD 744

CED	BW	WW	YW	SC	Milk	DOC	CW	Marb
-1	+5.3	+84	+149	+0.47	+33	+21	+73	+1.02

RE	Fat	\$M	\$W	\$F	\$G	\$B	\$C
+0.62	+0.021	+66	+69	+107	+71	+178	+297

Cow Bull Rockstar! Ratioed 112 at 205, 110 at 365. Top 10% in the Breed for WW, Top 5% YW.



**31****Trask Full House 3089**

BD: 3/19/23 Reg: 20852334 Tattoo: 3089

{YON FULL FORCE C398  
WR FULL HOUSE  
{WR RR MISS 342-036

HD 50K

{HERBSTER SERVICEMAN 544  
TRASK EMMA 820  
{TRASK EMMA 031

YON FUTURE FORCE Z77  
YON SARAH A100  
RITO REVENUE 5M2 OF 2536 PRE  
WR PROTEGE MISS 036 OF 7102

Birth Wt.  
70  
Adj. WW  
770

HERBSTER SERVICEMAN 364  
CHERRY OF CONANGA 2475  
S A V FINAL ANSWER 0035  
TRASK EMMA 812

CED	BW	WW	YW	SC	Milk	DOC	CW	Marb
+15	+0.2	+70	+125	+0.48	+37	+14	+53	+0.78

RE	Fat	\$M	\$W	\$F	\$G	\$B	\$C
+0.40	+0.048	+72	+78	+93	+53	+147	+263

Lots of GROW, actual weight 830 pounds at 229 days! Dam is a Serviceman 544 daughter and a good one!

**32****Trask Full House 3100**

BD: 2/18/23 Reg: 20852340 Tattoo: 3100

{YON FULL FORCE C398  
WR FULL HOUSE  
{WR RR MISS 342-036

HD 50K

{S POWERPOINT 866  
TRASK BLACKBELL 1136  
{TRASK BLACKBELL 848

YON FUTURE FORCE Z77  
YON SARAH A100  
RITO REVENUE 5M2 OF 2536 PRE  
WR PROTEGE MISS 036 OF 7102

Birth Wt.  
71  
Adj. WW  
732

S POWERPOINT WS 5503  
S ELITE 3163  
HERBSTER SERVICEMAN 544  
TRASK BLACKBELL

CED	BW	WW	YW	SC	Milk	DOC	CW	Marb
+13	+0.7	+70	+138	-0.19	+33	+4	+69	+0.66

RE	Fat	\$M	\$W	\$F	\$G	\$B	\$C
+0.35	+0.067	+63	+67	+114	+45	+159	+269

Top 15% in Breed for YW. Actual weight 764 pounds at 258 days. Ratioed 112 at 205, 111 at 365.

**33****Trask Full House 3104**

BD: 3/10/23 Reg: 20852343 Tattoo: 3104

{YON FULL FORCE C398  
WR FULL HOUSE  
{WR RR MISS 342-036

HD 50K

{S A V FINAL ANSWER 0035  
TRASK MS  
{TRASK MS BLACKBELL 107

YON FUTURE FORCE Z77  
YON SARAH A100  
RITO REVENUE 5M2 OF 2536 PRE  
WR PROTEGE MISS 036 OF 7102

Birth Wt.  
70  
Adj. WW  
630

SITZ TRAVELER 8180  
S A V EMULOUS 8145  
CONNELLY 044 062  
TRASK MS BLACKBELL 924

CED	BW	WW	YW	SC	Milk	DOC	CW	Marb
+11	+1.0	+71	+144	+1.36	+36	+29	+78	+0.51

RE	Fat	\$M	\$W	\$F	\$G	\$B	\$C
+0.67	+0.059	+64	+71	+125	+42	+167	+281

Top 10% in the Breed for YW and DOC. Gained 3.31 on test.

**34****Trask Full House 3105**

BD: 2/12/23 Reg: 20852344 Tattoo: 3105

{YON FULL FORCE C398  
WR FULL HOUSE  
{WR RR MISS 342-036

HD 50K

{TRASK WAYLON 506  
TRASK TILLIE 1047  
{TRASK TILLIE 414

YON FUTURE FORCE Z77  
YON SARAH A100  
RITO REVENUE 5M2 OF 2536 PRE  
WR PROTEGE MISS 036 OF 7102

Birth Wt.  
53  
Adj. WW  
597

WILKS WAYLON 198  
TRASK PRIDE 217  
RITO 1W22 OF RITA 5W17 9M25  
TRASK TILLIE 012

CED	BW	WW	YW	SC	Milk	DOC	CW	Marb
+18	-1.9	+50	+107	+0.38	+35	+18	+40	+0.61

RE	Fat	\$M	\$W	\$F	\$G	\$B	\$C
+0.38	+0.040	+56	+56	+87	+45	+132	+227

Another Slippery Heifer Bull! Top 1% in the breed for CED and CEM.

**35****Trask Full House 3106**

BD: 2/15/23 Reg: 20852346 Tattoo: 3106

{YON FULL FORCE C398  
WR FULL HOUSE  
{WR RR MISS 342-036

HD 50K

{S A V RAINFALL 6846  
TRASK EILEEN 1027  
{TRASK EILEEN 961

YON FUTURE FORCE Z77  
YON SARAH A100  
RITO REVENUE 5M2 OF 2536 PRE  
WR PROTEGE MISS 036 OF 7102

Birth Wt.  
58  
Adj. WW  
778

COLEMAN CHARLO 0256  
S A V BLACKCAP MAY 4136  
HERBSTER INCREASE 624  
TRASK EILEEN

CED	BW	WW	YW	SC	Milk	DOC	CW	Marb
+17	-2.2	+65	+120	+0.47	+40	+16	+60	+1.04

RE	Fat	\$M	\$W	\$F	\$G	\$B	\$C
+0.49	+0.051	+94	+82	+101	+68	+169	+313

Calving Ease backed by Fantastic EPD balance and Great Pedigree! Top him off with a bunch of GROW! Actual weight 825 at 261 days. Ratioed 119 at 205!!

**36****Trask Full House 3107**

BD: 3/14/23 Reg: 20852347 Tattoo: 3107

{YON FULL FORCE C398  
WR FULL HOUSE  
{WR RR MISS 342-036

HD 50K

{WILKS WAYLON 51  
TRASK MACKENZIE 835  
{TRASK MACKENZIE 459

YON FUTURE FORCE Z77  
YON SARAH A100  
RITO REVENUE 5M2 OF 2536 PRE  
WR PROTEGE MISS 036 OF 7102

BALDRIDGE WAYLON W34  
5175 20 MISSIE 64  
CONNEALY CAPITALIST 028  
TRASK MACKENZIE 755

Birth Wt.  
68  
Adj. WW  
691



CED	BW	WW	YW	SC	Milk	DOC	CW	Marb
+15	-0.8	+63	+117	+0.81	+32	+22	+49	+1.23

RE	Fat	\$M	\$W	\$F	\$G	\$B	\$C
+0.39	+0.027	+90	+74	+91	+78	+169	+309

Heifer bull with grow! Actual weight 755 pounds at 234 days. Top 3% in the Breed for CED and \$M.

**38****Trask Full House 3110**

BD: 2/17/23 Reg: 20852349 Tattoo: 3110

{YON FULL FORCE C398  
WR FULL HOUSE  
{WR RR MISS 342-036

HD 50K

{HERBSTER SERVICEMAN 544  
TRASK RACHEL 1057  
{TRASK RACHEL 638

YON FUTURE FORCE Z77  
YON SARAH A100  
RITO REVENUE 5M2 OF 2536 PRE  
WR PROTEGE MISS 036 OF 7102

HERBSTER SERVICEMAN 364  
CHERRY OF CONANGA 2475  
WILKS WAYLON 51  
TRASK RACHEL

Birth Wt.  
61  
Adj. WW  
742



CED	BW	WW	YW	SC	Milk	DOC	CW	Marb
+11	+2.7	+71	+136	+0.60	+35	+12	+62	+1.03

RE	Fat	\$M	\$W	\$F	\$G	\$B	\$C
+0.68	+0.022	+59	+68	+103	+72	+176	+287

Great All Around Bull! Actual weight 779 pounds at 259 days. Ratioed 113 at 205, 120 at 365. Gained 3.77 pounds on test. Hard to beat a bull like this!

**40****Trask Full House 3116**

BD: 3/8/23 Reg: 20852354 Tattoo: 3116

{YON FULL FORCE C398  
WR FULL HOUSE  
{WR RR MISS 342-036

HD 50K

{S POWERPOINT WS 5503  
TRASK BLACKBELL 916  
{TRASK BLACKBELL 781

YON FUTURE FORCE Z77  
YON SARAH A100  
RITO REVENUE 5M2 OF 2536 PRE  
WR PROTEGE MISS 036 OF 7102

TEHAMA REVERE  
S QUEEN ESSA 248  
S A V RESOURCE 1441  
TRASK BLACKBELL

Birth Wt.  
71  
Adj. WW  
628



CED	BW	WW	YW	SC	Milk	DOC	CW	Marb
+16	+0.2	+57	+107	+0.90	+25	+18	+38	+0.88

RE	Fat	\$M	\$W	\$F	\$G	\$B	\$C
+0.17	+0.052	+90	+60	+81	+55	+136	+266

Top 2% in the breed for CED, Top 3% \$M, Top 10% \$EN, and Angle.

**37****Trask Full House 3108**

BD: 3/20/23 Reg: 20852348 Tattoo: 3108

{YON FULL FORCE C398  
WR FULL HOUSE  
{WR RR MISS 342-036

HD 50K

{HERBSTER SERVICEMAN 544  
TRASK BLACK BELLE 871  
{TRASK BLACK BELLE

YON FUTURE FORCE Z77  
YON SARAH A100  
RITO REVENUE 5M2 OF 2536 PRE  
WR PROTEGE MISS 036 OF 7102

HERBSTER SERVICEMAN 364  
CHERRY OF CONANGA 2475  
CONNEALY CONSENSUS 578B  
TRASK BLACK BELLE 751

Birth Wt.  
71  
Adj. WW  
742

CED	BW	WW	YW	SC	Milk	DOC	CW	Marb
+17	-0.7	+63	+127	+1.62	+30	+23	+51	+0.81

RE	Fat	\$M	\$W	\$F	\$G	\$B	\$C
+0.24	+0.058	+80	+65	+95	+52	+147	+271

Another calving ease bull here with plenty of grow! Actual weight 797 pounds at 228 days. Ratioed 108 at 205 and 106 at 365. Top 1% in the Breed for CED.

**39****Trask Full House 3113**

BD: 3/25/23 Reg: 20852351 Tattoo: 3113

{YON FULL FORCE C398  
WR FULL HOUSE  
{WR RR MISS 342-036

HD 50K

{HERBSTER SERVICEMAN 544  
TRASK PROUD LASSIE 740  
{TRASK PROUD LASSIE 229

YON FUTURE FORCE Z77  
YON SARAH A100  
RITO REVENUE 5M2 OF 2536 PRE  
WR PROTEGE MISS 036 OF 7102

HERBSTER SERVICEMAN 364  
CHERRY OF CONANGA 2475  
TRASK NEW DESIGN 658  
TRASK PROUD LASSIE 949

Birth Wt.  
84  
Adj. WW  
730



CED	BW	WW	YW	SC	Milk	DOC	CW	Marb
+7	+2.8	+72	+126	+1.22	+38	+19	+63	+1.16

RE	Fat	\$M	\$W	\$F	\$G	\$B	\$C
+0.54	+0.024	+83	+76	+103	+77	+180	+316

Great Balance in the bull! Actual weight 772 pounds at 223 days. Top 10% in the breed for \$M, \$W and \$C. Top 15% \$B and \$G.





**41****Trask Full House 3117**

BD: 2/13/23 Reg: 20852355 Tattoo: 3117

{YON FULL FORCE C398  
WR FULL HOUSE  
{WR RR MISS 342-036

HD 50K

{INGRAM CHARCOAL 7001  
TRASK EMMA 1028  
{TRASK EMMA 937

YON FUTURE FORCE Z77  
YON SARAH A100  
RITO REVENUE 5M2 OF 2536 PRE  
WR PROTEGE MISS 036 OF 7102

Birth Wt.  
57  
Adj. WW  
684

COLEMAN CHARLO 0256  
COLEMAN DONNA 506  
HERBSTER IMPRINT 619  
TRASK EMMA 405



CED	BW	WW	YW	SC	Milk	DOC	CW	Marb
+17	-1.5	+64	+113	+1.05	+33	+25	+35	+0.83

RE	Fat	\$M	\$W	\$F	\$G	\$B	\$C
+0.37	+0.057	+85	+77	+67	+55	+122	+243

Another slippery heifer bull! Top 1% in the breed CED. Top 10% \$M and \$W

**43****Trask Full House 3010**

BD: 3/12/23 Reg: 20846968 Tattoo: 3010

{WR FULL HOUSE  
WR FULL HOUSE R104 OF 859  
{WR CHA BEULAH 859-659D

HD 50K

{S A V RAINFALL 6846  
TRASK MS BLACKBELL 1033  
{TRASK BLACKBELL 916

YON FULL FORCE C398  
WR RR MISS 342-036  
BALDRIDGE CHALLENGER  
JR MS BEULAH 659D

Birth Wt.  
60  
Adj. WW  
728

COLEMAN CHARLO 0256  
S A V BLACKCAP MAY 4136  
S POWERPOINT WS 5503  
TRASK BLACKBELL 781



CED	BW	WW	YW	SC	Milk	DOC	CW	Marb
+12	+0.4	+69	+119	+0.69	+30	+16	+31	+1.21

RE	Fat	\$M	\$W	\$F	\$G	\$B	\$C
+0.42	+0.045	+79	+75	+58	+76	+134	+253

Ratioed 111 at 205, 105 at 365! Top 15% or better in the Breed for CED, Marb, \$M, \$W, and \$G.

**42****Trask Full House 3120**

BD: 2/16/23 Reg: 20852357 Tattoo: 3120

{YON FULL FORCE C398  
WR FULL HOUSE  
{WR RR MISS 342-036

HD 50K

{HERBSTER SERVICEMAN 544  
TRASK QUEEN LOIS 1010  
{TRASK QUEEN LOIS

YON FUTURE FORCE Z77  
YON SARAH A100  
RITO REVENUE 5M2 OF 2536 PRE  
WR PROTEGE MISS 036 OF 7102

Birth Wt.  
65  
Adj. WW  
728

HERBSTER SERVICEMAN 364  
CHERRY OF CONANGA 2475  
CONNEALY IMPRESSION  
TRASK QUEEN LOIS 840



CED	BW	WW	YW	SC	Milk	DOC	CW	Marb
+10	+1.7	+71	+126	+0.95	+32	+9	+57	+1.09

RE	Fat	\$M	\$W	\$F	\$G	\$B	\$C
+0.52	+0.034	+66	+72	+94	+72	+166	+281

Another well balanced bull! Actual weight 764 at 260 days. Ratioed 111 at 205, 105 at 365.

**44****Trask Full House 3054**

BD: 3/24/23 Reg: 20846976 Tattoo: 3054

{WR FULL HOUSE  
WR FULL HOUSE R104 OF 859  
{WR CHA BEULAH 859-659D

HD 50K

{TEHAMA TAHOE B767  
TRASK MS TILLIE 032  
{TRASK MS TILLIE 754

YON FULL FORCE C398  
WR RR MISS 342-036  
BALDRIDGE CHALLENGER  
JR MS BEULAH 659D

Birth Wt.  
69  
Adj. WW  
653

TEHAMA UPWARD Y238  
TEHAMA MARY BLACKBIRD Y684  
RITO 1W22 OF RITA 5W17 9M25  
TRASK MS TILLIE 548



CED	BW	WW	YW	SC	Milk	DOC	CW	Marb
+11	-1.5	+64	+118	+0.96	+35	+25	+48	+1.38

RE	Fat	\$M	\$W	\$F	\$G	\$B	\$C
+0.73	+0.015	+81	+73	+90	+91	+182	+317

Top 5% in the breed \$G, Top 10% \$M and \$C, Top 15% \$B and \$W.

**45****Trask Full House 3082**

BD: 3/24/23 Reg: 20846979 Tattoo: 3082

{WR FULL HOUSE  
WR FULL HOUSE R104 OF 859  
{WR CHA BEULAH 859-659D

HD 50K

{K C F BENNETT THEROCK A473  
TRASK MS BLACKBELL 962  
{TRASK MS BLACKBELL 761

YON FULL FORCE C398  
WR RR MISS 342-036  
BALDRIDGE CHALLENGER  
JR MS BEULAH 659D

Birth Wt.  
70  
Adj. WW  
678

K C F BENNETT SOUTHSIDE  
K C F MISS PROTEGE W148  
WILKS WAYLON 81  
TRASK SURE SHOT



CED	BW	WW	YW	SC	Milk	DOC	CW	Marb
+9	+2.0	+70	+128	+0.72	+42	+17	+68	+1.02

RE	Fat	\$M	\$W	\$F	\$G	\$B	\$C
+0.96	-0.001	+44	+73	+106	+77	+183	+281

Top 15% in the breed for \$B, \$W and \$G.



# REFERENCE SIREs

## Ruggles Charisma 0643

BD: 01/16/2019

Reg: \*19535146

{ CONNEALY CONFIDENCE 0100  
**CONNEALY CONFIDENCE PLUS**      **AAA #\*17585576**  
 Sire  
 { ELBANNA OF CONANGA 1209  
 { SITZ UPWARD 307R  
**MILL BAR BLACKKEYES 7432**      **AAA #17868865**  
 Dam  
 { MILL BAR BLACK POWER 5839

CONNEALY TOBIN  
 BECKA GALA OF CONANGA 8281  
 CONNEALY CONSENSUS  
 ELBASTA OF CONANGA 9703  
 CONNEALY ONWARD  
 SITZ HENRIETTA PRIDE 81M  
 S A V NET WORTH 4200  
 MILL BAR BLACK POWER 3875



CED	BW	WW	YW	SC	CEM	Milk	\$EN	Doc	CW	Marb	RE	Fat
+13	-0.6	+66	+126	+1.24	+7	+26	-12	+17	+46	+0.78	+1.04	+0.046

\$M	\$W	\$F	\$G	\$B	\$C
+73	+63	+94	+62	+156	+275

## S Powerpoint 866

BD: 03/05/2018

Reg: 19198300

{ TEHAMA REVERE  
**S POWERPOINT WS 5503**      **AAA #\*18159093**  
 Sire  
 { S QUEEN ESSA 248  
 { S SUMMIT 956  
**S ELITE 3163**      **AAA 17594839**  
 Dam  
 { S ELITE 152

D R SIERRA CUT 7404  
 TEHAMA ELITE BLACKBIRD T003  
 S SUMMIT 956  
 S QUEEN ESSA 0131  
 GDAR GAME DAY 449  
 S PRIDE ANNA 709  
 S CHISUM 6175  
 S ELITE 885



CED	BW	WW	YW	SC	CEM	Milk	\$EN	Doc	CW	Marb	RE	Fat
+12	-0.2	+74	+123	+0.26	+11	+19	-28	-2	+51	+0.36	+0.39	+0.023

\$M	\$W	\$F	\$G	\$B	\$C
+59	+64	+84	+34	+118	+212

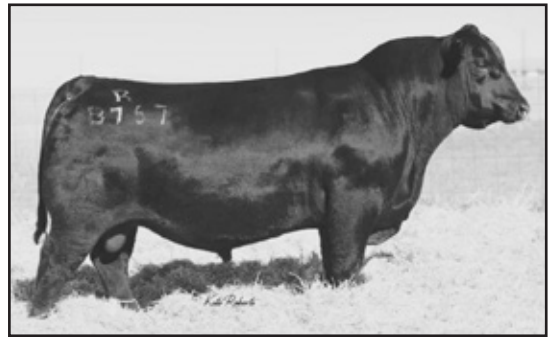
## Tehama Tahoe B767

BD: 09/06/2013

Reg: #\*17817177

{ SITZ UPWARD 307R  
**TEHAMA UPWARD Y238**      **AAA \*16760354**  
 Sire  
 { TEHAMA ELITE BLACKBIRD T735  
 { S A V FINAL ANSWER 0035  
**TEHAMA MARY BLACKBIRD Y684**      **AAA +\*16876258**  
 Dam  
 { TEHAMA MARY BLACKBIRD T073

CONNEALY ONWARD  
 SITZ HENRIETTA PRIDE 81M  
 TEHAMA GRIDMAKER L234  
 TEHAMA ELITE BLACKBIRD K592  
 SITZ TRAVELER 8180  
 S A V EMULOUS 8145  
 G A R RETAIL PRODUCT  
 TEHAMA MARY BLACKBIRD R704



CED	BW	WW	YW	SC	CEM	Milk	\$EN	Doc	CW	Marb	RE	Fat
+9	+0.2	+79	+134	+1.26	+7	+28	-21	+23	+50	+0.91	+0.74	+0.014

\$M	\$W	\$F	\$G	\$B	\$C
+73	+90	+87	+67	+154	+273

## Deer Valley Wall Street

BD: 01/23/2017

Reg: +\*18827829

{ BASIN PAYWEIGHT 006S  
**BASIN PAYWEIGHT 1682**      **AAA +\*17038724**  
 Sire  
 { 21AR O LASS 7017  
 { PLATTEMERE WEIGH UP K360  
**DEER VALLEY RITA 36113**      **AAA +\*17785214**  
 Dam  
 { DEER VALLEY RITA 9457

VERMILION PAYWEIGHT J847  
 BASIN LUCY 3829  
 HARB PENDLETON 765 J H  
 21AR O LASS F24A  
 SITZ UPWARD 307R  
 BARBARA OF PLATTEMERE 337  
 G A R NEW DESIGN 5050  
 G A R EXT 614



CED	BW	WW	YW	SC	CEM	Milk	\$EN	Doc	CW	Marb	RE	Fat
+8	+0.7	+75	+139	+0.82	+8	+23	-21	+18	+66	+1.01	+0.62	+0.084

\$M	\$W	\$F	\$G	\$B	\$C
+76	+74	+112	+65	+177	+306



# REFERENCE SIRES

## Sitz Resilient 10208

BD: 02/15/2018

Reg: \*19057457

{ MOHNEN SUBSTANTIAL 272  
**SITZ STELLAR 726D**                    **AAA \*18397542**  
 Sire { SITZ PRIDE 200B  
       { SITZ TOP GAME 561X  
**SITZ MISS BURGESS 1856**        **AAA \*18395931**  
 Dam { SITZ MISS BURGESS 4381

BENFIELD SUBSTANCE 8506  
 MOHNEN GLYN MAWR ELBA 1758  
 CONNEALY FINAL PRODUCT  
 SITZ PRIDE 308Y  
 GDAR GAME DAY 449  
 SITZ PRIDE 88T  
 SITZ RAINMAKER 10899  
 SITZ MISS BURGESS 1609



CED	BW	WW	YW	SC	CEM	Milk	\$EN	Doc	CW	Marb	RE	Fat
+7	+0.6	+75	+134	+1.16	+5	+22	-11	+3	+41	+0.99	+0.57	+0.014

\$M	\$W	\$F	\$G	\$B	\$C
+80	+77	+80	+69	+149	+273

## S A V Rainfall 6846

BD: 01/09/2016

Reg: +\*18578963

{ O C C PAXTON 730P  
**COLEMAN CHARLO 0256**            **AAA #\*\*16879074**  
 Sire { BOHI ABIGALE 6014  
       { S A V 8180 TRAVELER 004  
**S A V BLACKCAP MAY 4136**        **AAA \*14739095**  
 Dam { S A V MAY 2397

O C C FOCUS 813F  
 O C C BLACKBIRD 736K  
 SITZ TRAVELER 8180  
 S A V ABIGALE 6062  
 SITZ TRAVELER 8180  
 BOYD FOREVER LADY 8003  
 S A F 598 BANDO 5175  
 S A V MAY 7238



CED	BW	WW	YW	SC	CEM	Milk	\$EN	Doc	CW	Marb	RE	Fat
+7	+0.4	+56	+108	+0.89	+11	+26	+3	+15	+25	+0.72	+0.69	+0.005

\$M	\$W	\$F	\$G	\$B	\$C
+81	+67	+78	+58	+135	+256

## Other Yearling Sires

- WR Full House R104 of 859 - Lots 43-45**  
Reg: 20053094
- Mohnen Tahoe 1010 - Lots 61-63**  
Reg: 19771713
- Corner Stone Let It Rain 6L - Lot 78**  
Reg: 19658967
- Trask Yeti 809 - Lot 79**  
Reg: 19352403
- Herbster Increase 624 - Lot 80**  
Reg: 18595300
- O A Entice 120 - Lot 81**  
Reg: 19972400
- U-2 Coalition 206C - Lot 82**  
Reg: 18626847
- WEBO Spur 1165 - Lot 83**  
Reg: 20291807

## Two Year Old Sires

- Coleman Bravo 6313**  
Reg: 18734838
- D U Defender 032**  
Reg: 19880510
- V A R Power Play 7018**  
Reg: 18717078
- Stevenson Rockmount 41449**  
Reg: 17835843
- Stevenson Rockmount 50054**  
Reg: 18100500
- Mohnen Rainfall 6369**  
Reg: 19731231
- Mohnen Rainfall 6379**  
Reg: 1973123





## 46 Trask Charisma 3040

BD: 3/16/23 Reg: 20852298 Tattoo: 3040

{ CONNEALY CONFIDENCE PLUS  
RUGGLES CHARISMA 0643  
{ MILL BAR BLACKEYES 7432

CONNEALY CONFIDENCE 0100  
ELBANNA OF CONANGA 1209  
SITZ UPWARD 307R  
MILL BAR BLACK POWER 5839

Birth Wt. 73  
Adj. WW 738

HD 50K

{ S A V RESOURCE 1441  
TRASK PROUD LASSIE 724  
{ TRASK PROUD LASSIE 949

RITO 707 OF IDEAL 3407 7075  
S A V BLACKCAP MAY 4136  
G A R FUTURE DIRECTION L5144  
TRASK PROUD LASSIE 062

CED	BW	WW	YW	SC	Milk	DOC	CW	Marb
+8	+1.6	+67	+129	+1.58	+24	+16	+55	+0.53

RE	Fat	\$M	\$W	\$F	\$G	\$B	\$C
+0.78	+0.020	+50	+53	+97	+48	+144	+237

Outstanding Charisma son. Actual weight 801 pounds at 232 days! Ratioed 107 at 205, 113 at 365.



## 47 Trask Charisma 3051

BD: 3/17/23 Reg: 20852307 Tattoo: 3051

{ CONNEALY CONFIDENCE PLUS  
RUGGLES CHARISMA 0643  
{ MILL BAR BLACKEYES 7432

CONNEALY CONFIDENCE 0100  
ELBANNA OF CONANGA 1209  
SITZ UPWARD 307R  
MILL BAR BLACK POWER 5839

Birth Wt. 75  
Adj. WW 728

HD 50K

{ RITO 1W22 OF RITA 5W17 9M25  
TRASK PROUD LASSIE 877  
{ TRASK PROUD LASSIE 435

RITO 9M25 OF RITA 5F56 PRED  
RITA 5W17 OF RITA 3B7 2 878  
RAFTER Q FA 016H  
TRASK PROUD LASSIE 553

CED	BW	WW	YW	SC	Milk	DOC	CW	Marb
+5	+0.8	+68	+130	-0.02	+24	+22	+64	+0.49

RE	Fat	\$M	\$W	\$F	\$G	\$B	\$C
+0.83	+0.032	+60	+60	+112	+46	+158	+265

Actual weight 788 at 231 days! Ratioed 106 at 205, 110 at 365. Another great Charisma son packed with growth.

## 48 Trask Charisma 3030

BD: 3/16/23 Reg: 20852080 Tattoo: 3030

{ CONNEALY CONFIDENCE PLUS  
RUGGLES CHARISMA 0643  
{ MILL BAR BLACKEYES 7432

CONNEALY CONFIDENCE 0100  
ELBANNA OF CONANGA 1209  
SITZ UPWARD 307R  
MILL BAR BLACK POWER 5839

Birth Wt. 72  
Adj. WW 653

HD 50K

{ STEVENSON RAINMAKER 1162  
TRASK EMMA 556  
{ TRASK EMMA

BASIN RAINMAKER P175  
BASIN JOY 204U  
CONNEALY IMPRESSION  
TRASK EMMA 720

CED	BW	WW	YW	SC	Milk	DOC	CW	Marb
+3	+2.0	+61	+105	+0.46	+21	+14	+28	+0.69

RE	Fat	\$M	\$W	\$F	\$G	\$B	\$C
+0.77	-0.008	+73	+56	+73	+58	+131	+243

The phenotype shows strong in this confidence plus grandson. We really like the Charisma offspring.

## 49 Trask Charisma 3079

BD: 3/15/23 Reg: 20852327 Tattoo: 3079

{ CONNEALY CONFIDENCE PLUS  
RUGGLES CHARISMA 0643  
{ MILL BAR BLACKEYES 7432

CONNEALY CONFIDENCE 0100  
ELBANNA OF CONANGA 1209  
SITZ UPWARD 307R  
MILL BAR BLACK POWER 5839

Birth Wt. 74  
Adj. WW 749

HD 50K

{ G A R NEW DESIGN 5050  
TRASK MS TILLIE 403  
{ TRASK MS TILLIE 538

B/R NEW DESIGN 036  
G A R PRECISION 706  
G A R ENHANCER 5365  
TRASK TILLIE 747

CED	BW	WW	YW	SC	Milk	DOC	CW	Marb
+5	+1.8	+56	+110	+0.29	+28	+21	+43	+0.57

RE	Fat	\$M	\$W	\$F	\$G	\$B	\$C
+0.70	+0.006	+40	+51	+91	+50	+141	+223

Producing Pounds? Heres your guy, actual weight 834 pounds at 234 days! Ratioed 111 at 205, 104 at 365.



**50****Trask Charisma 3088**

BD: 3/14/23

Reg: 20852333

Tattoo: 3088

{ CONNEALY CONFIDENCE PLUS  
RUGGLES CHARISMA 0643  
{ MILL BAR BLACKEYES 7432

HD 50K

{ G A R NEW DESIGN 5050  
TRASK QUEEN MARY  
{ TRASK QUEEN MARY 516

CONNEALY CONFIDENCE 0100  
ELBANNA OF CONANGA 1209  
SITZ UPWARD 307R  
MILL BAR BLACK POWER 5839

B/R NEW DESIGN 036  
G A R PRECISION 706  
G A R EXPECTATION 6901  
TRASK QUEEN MARY 228

Birth Wt.

69

Adj. WW

655

CED	BW	WW	YW	SC	Milk	DOC	CW	Marb
+8	+2.2	+80	+138	+0.71	+20	+24	+60	+0.62

RE	Fat	\$M	\$W	\$F	\$G	\$B	\$C
+0.58	+0.021	+45	+64	+102	+50	+152	+242

Selling calves by the pound? Take a look at this Charisma son, Top 10% in the Breed for WW, Top 15% YW

**52****Trask Charisma 3121**

BD: 3/14/23

Reg: 20852358

Tattoo: 3121

{ CONNEALY CONFIDENCE PLUS  
RUGGLES CHARISMA 0643  
{ MILL BAR BLACKEYES 7432

HD 50K

{ RAFTER Q FA 016H  
TRASK QUEEN LOIS  
{ TRSAK QUEEN LOIS 143

CONNEALY CONFIDENCE 0100  
ELBANNA OF CONANGA 1209  
SITZ UPWARD 307R  
MILL BAR BLACK POWER 5839

S A V FINAL ANSWER 0035  
LC DAISY 526H  
CONNEALY IMPRESSION  
TRASK QUEEN LOIS 568

Birth Wt.

73

Adj. WW

618

CED	BW	WW	YW	SC	Milk	DOC	CW	Marb
+13	+0.1	+56	+106	+0.63	+23	+16	+31	+0.39

RE	Fat	\$M	\$W	\$F	\$G	\$B	\$C
+0.95	-0.003	+59	+53	+75	+45	+120	+215

Top 10% in the breed CED, Top 15% RE.

**54****Trask Powerpoint 3052**

BD: 4/8/23

Reg: 20846975

Tattoo: 3052

{ S POWERPOINT WS 5503  
S POWERPOINT 866  
{ S ELITE 3163

HD 50K

{ CONNEALY CONSENSUS 578B  
TRASK KATIE 675  
{ TRASK KATIE 753

TEHAMA REVERE  
S QUEEN ESSA 248  
S SUMMIT 956  
S ELITE 152

CONNEALY CONSENSUS  
POWSA OF CONANGA 687 7567  
MYTTY IN FOCUS  
TRASK KATIE 540

Birth Wt.

73

Adj. WW

758

CED	BW	WW	YW	SC	Milk	DOC	CW	Marb
+0	+3.9	+86	+141	+1.54	+18	+10	+72	+0.43

RE	Fat	\$M	\$W	\$F	\$G	\$B	\$C
+0.48	-0.004	+31	+61	+112	+41	+152	+228

Actual weight 768 pounds at 209 days. Ratioed 110 at 205.

**51****Trask Charisma 3118**

BD: 3/24/23

Reg: 20852356

Tattoo: 3118

{ CONNEALY CONFIDENCE PLUS  
RUGGLES CHARISMA 0643  
{ MILL BAR BLACKEYES 7432

HD 50K

{ STEVENSON RAINMAKER 1162  
TRASK PAMELA LADY 662  
{ TRASK PAMELA LADY 943

CONNEALY CONFIDENCE 0100  
ELBANNA OF CONANGA 1209  
SITZ UPWARD 307R  
MILL BAR BLACK POWER 5839

BASIN RAINMAKER P175  
BASIN JOY 204U  
S A V FINAL ANSWER 0035  
TRASK PAMELA LADY 240

Birth Wt.

85

Adj. WW

722

CED	BW	WW	YW	SC	Milk	DOC	CW	Marb
+4	+0.1	+65	+120	+1.04	+29	+24	+43	+0.87

RE	Fat	\$M	\$W	\$F	\$G	\$B	\$C
+0.75	+0.031	+76	+65	+90	+64	+154	+276

Great Bull that checks all the boxes! Actual weight 766 pounds at 224 days. Ratioed 105 at 205, 114 at 365.

**53****Trask Powerpoint 3002**

BD: 4/9/23

Reg: 20846967

Tattoo: 3002

{ S POWERPOINT WS 5503  
S POWERPOINT 866  
{ S ELITE 3163

HD 50K

{ RITO 12E7 OF 5F56 RITO 5M2  
TRASK EILEEN 508  
{ TRASK EILEEN

TEHAMA REVERE  
S QUEEN ESSA 248  
S SUMMIT 956  
S ELITE 152

RITO REVENUE 5M2 OF 2536 PRE  
RITA 5F56 OF 1198 FD  
RITO 1W22 OF RITA 5W17 9M25  
TRASK EILEEN 129

Birth Wt.

65

Adj. WW

644

CED	BW	WW	YW	SC	Milk	DOC	CW	Marb
+12	-0.9	+61	+108	+0.88	+29	+9	+45	+0.24

RE	Fat	\$M	\$W	\$F	\$G	\$B	\$C
+0.62	+0.017	+58	+64	+80	+31	+111	+202

Top 10% of the Breed for CED, Top 15% for BW, Top 25% for both HP & CEM, Ratioed 102 YW, Gained 3.30 on test and ratioed 115.



**55****Trask Powerpoint 3091**

BD: 3/1/23

Reg: 20846981

Tattoo: 3091

{ S POWERPOINT WS 5503  
S POWERPOINT 866  
{ S ELITE 3163

TEHAMA REVERE  
S QUEEN ESSA 248  
S SUMMIT 956  
S ELITE 152

Birth Wt.  
61  
Adj. WW  
712

HD 50K

{ COLEMAN BRAVO 6313  
TRASK PROUD LASSIE 1063  
{ TRASK PROUD LASSIE 921

COLEMAN CHARLO 0256  
COLEMAN DONNA 714  
HERBSTER IMPRINT 619  
TRASK PROUD LASSIE 462

CED	BW	WW	YW	SC	Milk	DOC	CW	Marb
+13	+0.8	+72	+119	+1.41	+28	+15	+53	+0.19

RE	Fat	\$M	\$W	\$F	\$G	\$B	\$C
+0.64	+0.002	+85	+77	+82	+30	+113	+232

Ratied 109 at 205. Dam is sired by Coleman Bravo 6313. Very Moderate and feed efficient.

**57****Trask Tahoe 3022**

BD: 3/10/23

Reg: 20852071

Tattoo: 3022

{ TEHAMA UPWARD Y238  
TEHAMA TAHOE B767  
{ TEHAMA MARY BLACKBIRD Y684

SITZ UPWARD 307R  
TEHAMA ELITE BLACKBIRD T735  
S A V FINAL ANSWER 0035  
TEHAMA MARY BLACKBIRD T073

Birth Wt.  
77  
Adj. WW  
711

HD 50K

{ RITO 1W22 OF RITA 5W17 9M25  
TRASK MS TILLIE 754  
{ TRASK MS TILLIE 548

RITO 9M25 OF RITA 5F56 PRED  
RITA 5W17 OF RITA 3B7 2 878  
CONNEALY TIMELINE  
TRASK TILLIE 314



CED	BW	WW	YW	SC	Milk	DOC	CW	Marb
+4	+0.8	+66	+108	+0.73	+27	+21	+41	+0.84

RE	Fat	\$M	\$W	\$F	\$G	\$B	\$C
+0.90	-0.001	+65	+69	+75	+67	+142	+249

One of my personal Favorites, actual weight 783 pounds at 238 days! Dam is an outstanding Rito 1w22 daughter with 5 calves and 372 day average calving interval.

**59****Trask Tahoe 3037**

BD: 3/16/23

Reg: 20852089

Tattoo: 3037

{ TEHAMA UPWARD Y238  
TEHAMA TAHOE B767  
{ TEHAMA MARY BLACKBIRD Y684

SITZ UPWARD 307R  
TEHAMA ELITE BLACKBIRD T735  
S A V FINAL ANSWER 0035  
TEHAMA MARY BLACKBIRD T073

Birth Wt.  
76  
Adj. WW  
678

HD 50K

{ STEVENSON ROCKMOUNT 41027  
TRASK TORRIE 725  
{ TRASK TORRIE 579

STEVENSON ROCKMOUNT RX933  
STEVENSON LUCKY CHARM 5190  
RAFTER Q FA 016H  
TRASK TORRIE 804



CED	BW	WW	YW	SC	Milk	DOC	CW	Marb
+0	+3.4	+72	+109	+0.95	+14	+22	+44	+0.71

RE	Fat	\$M	\$W	\$F	\$G	\$B	\$C
+0.91	-0.029	+47	+55	+82	+63	+145	+235

Good Cow Bull. Top 25% in breed for WW.

**56****Trask Tahoe 3019**

BD: 3/3/23

Reg: 20852069

Tattoo: 3019

{ TEHAMA UPWARD Y238  
TEHAMA TAHOE B767  
{ TEHAMA MARY BLACKBIRD Y684

SITZ UPWARD 307R  
TEHAMA ELITE BLACKBIRD T735  
S A V FINAL ANSWER 0035  
TEHAMA MARY BLACKBIRD T073

Birth Wt.  
76  
Adj. WW  
629

HD 50K

{ S A V RAINFALL 6846  
TRASK QUEEN LOIS 050  
{ TRASK QUEEN LOIS 615

COLEMAN CHARLO 0256  
S A V BLACKCAP MAY 4136  
CONNEALY CONSENSUS 578B  
TRASK QUEEN LOIS 711

CED	BW	WW	YW	SC	Milk	DOC	CW	Marb
+2	+3.8	+86	+137	+1.40	+21	+27	+45	+0.51

RE	Fat	\$M	\$W	\$F	\$G	\$B	\$C
+0.69	+0.010	+72	+74	+76	+47	+122	+230

A solid Tahoe son, Top 5% of the breed in WW.

**58****Trask Tahoe 3027**

BD: 3/16/23

Reg: 20852075

Tattoo: 3027

{ TEHAMA UPWARD Y238  
TEHAMA TAHOE B767  
{ TEHAMA MARY BLACKBIRD Y684

SITZ UPWARD 307R  
TEHAMA ELITE BLACKBIRD T735  
S A V FINAL ANSWER 0035  
TEHAMA MARY BLACKBIRD T073

Birth Wt.  
77  
Adj. WW  
679

HD 50K

{ G A R 100X  
TRASK KATIE 709  
{ TRASK KATIE 746

A A R TEN X 7008 S A  
G A R 5050 NEW DESIGN A91  
SPEAR U RANCH HAND 8303  
TRASK KATIE 752



CED	BW	WW	YW	SC	Milk	DOC	CW	Marb
+4	+1.4	+55	+98	+1.83	+26	+25	+31	+0.67

RE	Fat	\$M	\$W	\$F	\$G	\$B	\$C
+0.32	+0.008	+74	+57	+67	+50	+117	+226

Actual weight 737 pounds at 232 days. Top 5% in the breed for SC.

**60****Trask Tahoe 3101**

BD: 3/3/23

Reg: 20852341

Tattoo: 3101

{ TEHAMA UPWARD Y238  
TEHAMA TAHOE B767  
{ TEHAMA MARY BLACKBIRD Y684

SITZ UPWARD 307R  
TEHAMA ELITE BLACKBIRD T735  
S A V FINAL ANSWER 0035  
TEHAMA MARY BLACKBIRD T073

Birth Wt.  
69  
Adj. WW  
672

HD 50K

{ WILKS WAYLON 185  
TRASK EILEEN 011  
{ TRASK EILEEN

BALDRIDGE WAYLON W34  
WILKS INF 77R EMPRESS 74  
CONNEALY IMPRESSION  
TRASK EILEEN 717

CED	BW	WW	YW	SC	Milk	DOC	CW	Marb
+9	-0.1	+73	+128	+1.00	+13	+24	+43	+0.70

RE	Fat	\$M	\$W	\$F	\$G	\$B	\$C
+0.46	+0.013	+59	+57	+92	+53	+145	+247

A very nice Tahoe son, well balanced across the board. Top 25% in the Breed for WW and YW.



**61****Trask Tahoe 3086**

BD: 4/8/23

Reg: 20846980

Tattoo: 3086

{TEHAMA TAHOE B767  
MOHNEN TAHOE 1010  
{MOHNEN JILT 1848

TEHAMA UPWARD Y238  
TEHAMA MARY BLACKBIRD Y684  
S A V SENSATION 5615  
MOHNEN JILT 2504

Birth Wt.  
76  
Adj. WW  
708

HD 50K

{RITO 1W22 OF RITA 5W17 9M25  
TRASK PAMELA LADY 705  
{TRASK PAMELA LADY 114

RITO 9M25 OF RITA 5F56 PRED  
RITA 5W17 OF RITA 3B7 2 878  
CONNEALY 044 062  
TRASK PAMELA LADY 943



CED	BW	WW	YW	SC	Milk	DOC	CW	Marb
+5	+1.1	+72	+125	+1.19	+14	+24	+47	+1.06

RE	Fat	\$M	\$W	\$F	\$G	\$B	\$C
+0.55	-0.011	+52	+54	+95	+75	+169	+271

This Bull is one of my favorites when i walk the pen daily. He is out of one of my favorite cows, she's a 1w22 daughter. 1w22 is a cow maker deluxe!

**62****Trask Tahoe 3017**

BD: 4/27/23

Reg: 20846971

Tattoo: 3017

{TEHAMA TAHOE B767  
MOHNEN TAHOE 1010  
{MOHNEN JILT 1848

TEHAMA UPWARD Y238  
TEHAMA MARY BLACKBIRD Y684  
S A V SENSATION 5615  
MOHNEN JILT 2504

Birth Wt.  
75  
Adj. WW  
754

HD 50K

{G A R NEW DESIGN 5050  
TRASK JULIE 402  
{TRASK JULIE 521

B/R NEW DESIGN 036  
G A R PRECISION 706  
RITO 616 OF 4B20 6807  
TRASK JULIE 727



CED	BW	WW	YW	SC	Milk	DOC	CW	Marb
+9	+0.8	+63	+113	+1.51	+35	+29	+43	+0.72

RE	Fat	\$M	\$W	\$F	\$G	\$B	\$C
+1.10	-0.029	+53	+65	+79	+66	+145	+241

Add thickness with this Mohnen Tahoe 1010 son. 1010 is a bull we own that throws great looking thick calves. Dam is a 5050 daughter, we love them!

**63****Trask Tahoe 3109**

BD: 3/30/23

Reg: 20846984

Tattoo: 3109

{TEHAMA TAHOE B767  
MOHNEN TAHOE 1010  
{MOHNEN JILT 1848

TEHAMA UPWARD Y238  
TEHAMA MARY BLACKBIRD Y684  
S A V SENSATION 5615  
MOHNEN JILT 2504

Birth Wt.  
80  
Adj. WW  
701

HD 50K

{HERBSTER SERVICEMAN 544  
TRASK SAMMIE 813  
{TRASK SAMMIE

HERBSTER SERVICEMAN 364  
CHERRY OF CONANGA 2475  
CONNEALY IMPRESSION  
TRASK SAMMIE 714



CED	BW	WW	YW	SC	Milk	DOC	CW	Marb
-2	+4.8	+76	+123	+2.28	+24	+22	+47	+0.87

RE	Fat	\$M	\$W	\$F	\$G	\$B	\$C
+0.73	-0.039	+65	+62	+80	+69	+149	+258

Good Cow Bull here. Add thickness with this Mohnen Tahoe son. Top 1% of the breed for SC.

**64****Trask Wall Street 3006**

BD: 3/14/23

Reg: 20852062

Tattoo: 3006

{BASIN PAYWEIGHT 1682  
DEER VALLEY WALL STREET  
{DEER VALLEY RITA 36113

BASIN PAYWEIGHT 0065  
21AR O LASS 7017  
PLATTEMERE WEIGH UP K360  
DEER VALLEY RITA 9457

Birth Wt.  
78  
Adj. WW  
681

HD 50K

{RAFTER Q FA 016H  
TRASK PROUD LASSIE 566  
{TRASK PROUD LASSIE 113

S A V FINAL ANSWER 0035  
LC DAISY 526H  
CONNEALY 044 062  
TRASK PROUD LASSIE 503



CED	BW	WW	YW	SC	Milk	DOC	CW	Marb
+6	-0.6	+55	+99	+0.00	+21	+22	+31	+1.02

RE	Fat	\$M	\$W	\$F	\$G	\$B	\$C
-0.03	+0.064	+78	+57	+66	+59	+125	+240

Top 15% of the Breed for BW, Top 10% for \$EN, Top 20% for Marb, Top 15% for \$M.

**65****Trask Wall Street 3056**

BD: 3/11/23

Reg: 20852309

Tattoo: 3056

{BASIN PAYWEIGHT 1682  
DEER VALLEY WALL STREET  
{DEER VALLEY RITA 36113

BASIN PAYWEIGHT 0065  
21AR O LASS 7017  
PLATTEMERE WEIGH UP K360  
DEER VALLEY RITA 9457

Birth Wt.  
75  
Adj. WW  
578

HD 50K

{STEVENS ON RAINMAKER 1162  
TRASK GEORGEANNA 553DDP  
{TRASK GEORGEANNA 814

BASIN RAINMAKER P175  
BASIN JOY 204U  
G A R NEW DESIGN 5050  
TRASK GEORGEANNA 805



CED	BW	WW	YW	SC	Milk	DOC	CW	Marb
+5	+1.8	+57	+116	+0.69	+22	+13	+50	+0.79

RE	Fat	\$M	\$W	\$F	\$G	\$B	\$C
+0.61	-0.007	+59	+47	+102	+61	+163	+270

Top 2% in the breed for claw. Top 30% \$B, \$G, \$C.



## 66 Trask Wall Street 3049

BD: 3/17/23

Reg: 20852305

Tattoo: 3049

{BASIN PAYWEIGHT 1682  
DEER VALLEY WALL STREET  
{DEER VALLEY RITA 36113

BASIN PAYWEIGHT 0065  
21AR O LASS 7017  
PLATTEMERE WEIGH UP K360  
DEER VALLEY RITA 9457

Birth Wt.  
75  
Adj. WW  
696

HD 50K

{STEVENS ON ROCKMOUNT 41027  
TRASK PROUD LASSIE 7001  
{TRASK PROUD LASSIE 514

STEVENS ON ROCKMOUNT RX933  
STEVENS ON LUCKY CHARM 5190  
RITO 1W22 OF RITA 5W17 9M25  
TRASK PROUD LASSIE 949



CED	BW	WW	YW	SC	Milk	DOC	CW	Marb
+9	+1.1	+70	+122	-0.14	+23	+14	+59	+0.92

RE	Fat	\$M	\$W	\$F	\$G	\$B	\$C
+0.48	+0.038	+68	+65	+104	+62	+167	+285

Actual weight 753 pounds at 231 days. As a group, the Wall Street calves really impressed us this year, at weaning they were a stand out for sure.



## 67 Trask Wall Street 3073

BD: 3/18/23

Reg: 20852323

Tattoo: 3073

{BASIN PAYWEIGHT 1682  
DEER VALLEY WALL STREET  
{DEER VALLEY RITA 36113

BASIN PAYWEIGHT 0065  
21AR O LASS 7017  
PLATTEMERE WEIGH UP K360  
DEER VALLEY RITA 9457

Birth Wt.  
70  
Adj. WW  
647

HD 50K

{STEVENS ON ROCKMOUNT 41027  
TRASK AMANDA 623  
{TRASK AMANDA 442

STEVENS ON ROCKMOUNT RX933  
STEVENS ON LUCKY CHARM 5190  
RITO 12E7 OF 5F56 RITO 5M2  
TRASK AMANDA 836

CED	BW	WW	YW	SC	Milk	DOC	CW	Marb
+4	+1.7	+68	+122	+0.11	+16	+17	+54	+0.74

RE	Fat	\$M	\$W	\$F	\$G	\$B	\$C
+0.56	+0.042	+53	+54	+104	+54	+158	+258

Top 35% in the Breed for YW and \$B

## 68 Trask Wall Street 3068

BD: 3/14/23

Reg: 20852319

Tattoo: 3068

{BASIN PAYWEIGHT 1682  
DEER VALLEY WALL STREET  
{DEER VALLEY RITA 36113

BASIN PAYWEIGHT 0065  
21AR O LASS 7017  
PLATTEMERE WEIGH UP K360  
DEER VALLEY RITA 9457

Birth Wt.  
73  
Adj. WW  
726

HD 50K

{MOGCK SURE SHOT  
TRASK JAYMIE 532  
{TRASK JAYMIE 108

MYTTY IN FOCUS  
MOGCK BLACK LASS 2065  
CONNEALY 044 062  
TRASK JAYMIE 926

CED	BW	WW	YW	SC	Milk	DOC	CW	Marb
+11	+0.9	+65	+116	+1.61	+23	+15	+51	+0.25

RE	Fat	\$M	\$W	\$F	\$G	\$B	\$C
+0.82	+0.018	+63	+61	+95	+34	+129	+230

Packed with grow! Actual weight 792 pounds at 234 days. Ratioed 106 at 205, 103 at 365

## 69 Trask Resilient 3008

BD: 3/16/23

Reg: 20852064

Tattoo: 3008

{SITZ STELLAR 726D  
SITZ RESILIENT 10208  
{SITZ MISS BURGESS 1856

MOHNEN SUBSTANTIAL 272  
SITZ PRIDE 200B  
SITZ TOP GAME 561X  
SITZ MISS BURGESS 4381

Birth Wt.  
71  
Adj. WW  
729

HD 50K

{BASIN PAYWEIGHT 1682  
TRASK ANITA 700  
{TRASK ANITA 515

BASIN PAYWEIGHT 0065  
21AR O LASS 7017  
RITO 1W22 OF RITA 5W17 9M25  
TRASK ANITA 958



CED	BW	WW	YW	SC	Milk	DOC	CW	Marb
+11	+0.0	+67	+122	+1.63	+28	+9	+39	+0.82

RE	Fat	\$M	\$W	\$F	\$G	\$B	\$C
+0.66	-0.003	+75	+67	+73	+63	+136	+251

Ratioed 106 at 205, 101 at 365. Top 15% of the Breed for CED, Top 25% for BW. Top 10% for both SC & HP, Top 25% for \$M.



**70****Trask Resilient 3004**

BD: 3/11/23 Reg: 20852060 Tattoo: 3004

{SITZ STELLAR 726D  
SITZ RESILIENT 10208  
{SITZ MISS BURGESS 1856

HD 50K

{MOGCK SURE SHOT  
TRASK TILLIE 533  
{TRASK TILLIE 653

MÖHNEN SUBSTANTIAL 272  
SITZ PRIDE 200B  
SITZ TOP GAME 561X  
SITZ MISS BURGESS 4381

MYTTY IN FOCUS  
MOGCK BLACK LASS 2065  
G A R ENHANCER 5365  
TRASK TILLIE 901

Birth Wt.  
75  
Adj. WW  
730

CED	BW	WW	YW	SC	Milk	DOC	CW	Marb
+10	-0.1	+66	+103	+1.53	+22	+2	+32	+0.76

RE	Fat	\$M	\$W	\$F	\$G	\$B	\$C
+0.46	+0.067	+76	+71	+68	+52	+119	+230

Ratioed 106 at 205 wt. Top 20% of the Angus Breed for CED, top 25% for BW, Top 15% for SC, Top 10% for %EN, Top 20% for both \$M,\$W.

**71****Trask Resilient 3020**

BD: 3/12/23 Reg: 20852070 Tattoo: 3020

{SITZ STELLAR 726D  
SITZ RESILIENT 10208  
{SITZ MISS BURGESS 1856

HD 50K

{CONNEALY IMPRESSION  
TRASK  
{TRASK QUEEN LOIS 712

MÖHNEN SUBSTANTIAL 272  
SITZ PRIDE 200B  
SITZ TOP GAME 561X  
SITZ MISS BURGESS 4381

CONNEALY REFLECTION  
PEARL PAMMY OF CONANGA 194  
G A R FUTURE DIRECTION L5144  
TRASK QUEEN LOIS 550

Birth Wt.  
77  
Adj. WW  
631

CED	BW	WW	YW	SC	Milk	DOC	CW	Marb
+5	+1.5	+66	+115	+0.52	+17	+20	+40	+0.87

RE	Fat	\$M	\$W	\$F	\$G	\$B	\$C
+0.71	-0.004	+69	+58	+90	+66	+156	+271

Dam is an 11 year old proven Connealy Impression Daughter, wish we had more like her!

**72****Trask Resilient 3031**

BD: 3/14/23 Reg: 20852081 Tattoo: 3031

{SITZ STELLAR 726D  
SITZ RESILIENT 10208  
{SITZ MISS BURGESS 1856

HD 50K

{CONNEALY IMPRESSION  
TRASK QUEEN LOIS  
{TRASK QUEEN LOIS 564

MÖHNEN SUBSTANTIAL 272  
SITZ PRIDE 200B  
SITZ TOP GAME 561X  
SITZ MISS BURGESS 4381

CONNEALY REFLECTION  
PEARL PAMMY OF CONANGA 194  
SPEAR U RANCH HAND 8303  
TRASK QUEEN LOIS 906

Birth Wt.  
69  
Adj. WW  
665

CED	BW	WW	YW	SC	Milk	DOC	CW	Marb
+5	+1.5	+68	+120	+0.49	+26	+9	+42	+1.16

RE	Fat	\$M	\$W	\$F	\$G	\$B	\$C
+0.72	-0.001	+74	+66	+81	+81	+162	+284

Top 10% in the breed for HP. Lots of Proven Cow Power here, Connealy Impression and Spear U Ranch Hand.

**73****Trask Resilient 3072**

BD: 3/16/23 Reg: 20852322 Tattoo: 3072

{SITZ STELLAR 726D  
SITZ RESILIENT 10208  
{SITZ MISS BURGESS 1856

HD 50K

{SITZ SENSATION 693A  
TRASK PROUD LASSIE 644  
{TRASK PROUD LASSIE 042

MÖHNEN SUBSTANTIAL 272  
SITZ PRIDE 200B  
SITZ TOP GAME 561X  
SITZ MISS BURGESS 4381

A A R TEN X 7008 S A  
SITZ BARBARAMERE NELL 13Y  
S A V FINAL ANSWER 0035  
TRASK PROUD LASSIE 603

Birth Wt.  
76  
Adj. WW  
651

CED	BW	WW	YW	SC	Milk	DOC	CW	Marb
+4	+1.3	+62	+109	+1.61	+25	+12	+37	+0.86

RE	Fat	\$M	\$W	\$F	\$G	\$B	\$C
+0.34	+0.041	+85	+61	+77	+57	+134	+259

Like Maternal? Take a close look at this bull! Top 3% in the breed for HP, Top 10% SC, \$M.

**74****Trask Resilient 3075**

BD: 3/14/23 Reg: 20852324 Tattoo: 3075

{SITZ STELLAR 726D  
SITZ RESILIENT 10208  
{SITZ MISS BURGESS 1856

HD 50K

{RAFTER Q FA 016H  
TRASK TORRIE  
{TRASK TORRIE 915

MÖHNEN SUBSTANTIAL 272  
SITZ PRIDE 200B  
SITZ TOP GAME 561X  
SITZ MISS BURGESS 4381

S A V FINAL ANSWER 0035  
LC DAISY 526H  
G A R NEW DESIGN 5050  
TRASK TORRIE 213

Birth Wt.  
67  
Adj. WW  
647

CED	BW	WW	YW	SC	Milk	DOC	CW	Marb
+14	+1.1	+65	+118	+0.42	+26	+15	+39	+0.34

RE	Fat	\$M	\$W	\$F	\$G	\$B	\$C
+0.64	+0.000	+79	+63	+75	+38	+113	+226

Great Grow! Gained 3.59 pounds on test. Ratioed 106 at 365.

**75****Trask Rainfall 3048**

BD: 3/15/23 Reg: 20852304 Tattoo: 3048

{COLEMAN CHARLO 0256  
S A V RAINFALL 6846  
{S A V BLACKCAP MAY 4136

HD 50K

{WILKS WAYLON 81  
TRASK KATIE 738  
{TRASK KATIE

O C C PAXTON 730P  
BOHI ABIGALE 6014  
S A V 8180 TRAVELER 004  
S A V MAY 2397

BALDRIDGE WAYLON W34  
WILKS INF 77R ROSEBUD 106  
RITO 1W22 OF RITA 5W17 9M25  
TRASK KATIE 138

Birth Wt.  
80  
Adj. WW  
736

CED	BW	WW	YW	SC	Milk	DOC	CW	Marb
-7	+4.5	+63	+115	+0.13	+21	+20	+44	+0.64

RE	Fat	\$M	\$W	\$F	\$G	\$B	\$C
+0.62	+0.041	+69	+47	+81	+50	+130	+238

Great Cow Bull! Actual weight 801 pounds at 233 days. Ratioed 107 at 205.

**77****Trask Rainfall 3061**

BD: 3/4/23 Reg: 20852312 Tattoo: 3061

{COLEMAN CHARLO 0256  
S A V RAINFALL 6846  
{S A V BLACKCAP MAY 4136

HD 50K

{TRASK SURE SHOT 532  
TRASK MS TILLIE 965  
{TRASK MS TILLIE 403

O C C PAXTON 730P  
BOHI ABIGALE 6014  
S A V 8180 TRAVELER 004  
S A V MAY 2397

MOGCK SURE SHOT  
TRASK PRIDE 765  
G A R NEW DESIGN 5050  
TRASK MS TILLIE 538

Birth Wt.  
60  
Adj. WW  
587

CED	BW	WW	YW	SC	Milk	DOC	CW	Marb
+13	-2.2	+52	+97	+0.92	+30	+30	+21	+1.03

RE	Fat	\$M	\$W	\$F	\$G	\$B	\$C
+0.89	+0.015	+82	+64	+62	+75	+138	+261

Very Well Balanced set of epds across the board.

**76****Trask Rainfall 3050**

BD: 3/19/23 Reg: 20852306 Tattoo: 3050

{COLEMAN CHARLO 0256  
S A V RAINFALL 6846  
{S A V BLACKCAP MAY 4136

HD 50K

{CONNEALY CAPITALIST 028  
TRASK JAYMIE 580  
{TRASK JAYMIE 906

O C C PAXTON 730P  
BOHI ABIGALE 6014  
S A V 8180 TRAVELER 004  
S A V MAY 2397

S A V FINAL ANSWER 0035  
PRIDES PITA OF CONANGA 8821  
G A R NEW DESIGN 5050  
TRASK JAYMIE 413

Birth Wt.  
75  
Adj. WW  
701

CED	BW	WW	YW	SC	Milk	DOC	CW	Marb
+4	+2.5	+62	+108	+0.99	+37	+14	+50	+0.71

RE	Fat	\$M	\$W	\$F	\$G	\$B	\$C
+0.78	+0.028	+90	+72	+97	+57	+153	+288

Solid, Solid Bull all around backed by a proven cow with 7 calves in a 73 day average calving interval. Actual weight 755 pounds at 229 days.

**78****Trask Rainfall 3069**

BD: 4/30/23 Reg: 20846978 Tattoo: 3069

{S A V RAINFALL 6846  
CORNER STONE LET IT RAIN 6L  
{CORNER STONE MADAME PRIDE 87

HD 50K

{MOGCK SURE SHOT  
TRASK SURE SHOT 531  
{TRASK PROUD LASSIE 854

COLEMAN CHARLO 0256  
S A V BLACKCAP MAY 4136  
S A V INTERNATIONAL 2020  
S A V MADAME PRIDE 2218

MYTTY IN FOCUS  
MOGCK BLACK LASS 2065  
CONNEALY 044 062  
TRASK PROUD LASSIE 656

Birth Wt.  
77  
Adj. WW  
754

CED	BW	WW	YW	SC	Milk	DOC	CW	Marb
+2	+3.9	+71	+140	+1.24	+29	+25	+58	+0.34

RE	Fat	\$M	\$W	\$F	\$G	\$B	\$C
+0.76	+0.004	+49	+56	+105	+39	+144	+236

Good Cow Bull, Top 15% in the breed for YW.

**79****Trask Yeti 3057**

BD: 4/9/23 Reg: 20853213 Tattoo: 3057

{PAHR YETI B5  
TRASK YETI 809  
{TRASK QUEEN LOIS 661

HD 50K

{V A R GENERATION 2100  
TRASK PROUD LASSIE 721  
{TRASK PROUD LASSIE 542

BASIN PAYWEIGHT 1682  
PAHR RITA Q28 OF 0151 9Q20  
CONNEALY CONSENSUS 578B  
TRASK QUEEN LOIS 003

CONNEALY CONSENSUS 7229  
SANDPOINT BLACKBIRD 8809  
G A R INTEGRITY  
TRASK PROUD LASSIE 062

Birth Wt.  
82  
Adj. WW  
746

CED	BW	WW	YW	SC	Milk	DOC	CW	Marb
-3	+5.6	+83	+135	+1.33	+10	+23	+56	+0.24

RE	Fat	\$M	\$W	\$F	\$G	\$B	\$C
+0.46	+0.013	+49	+49	+100	+29	+129	+216

Pound adding cow bull! Actual weight 753 pounds at 208 days. Ratioed 109 at 205, 114 at 365. Gained 3.5 pounds on test.



**80****Trask Increase 3097**

BD: 3/14/23

Reg: 20846982

Tattoo: 3097

{S A V INTERNATIONAL 2020  
HERBSTER INCREASE 624  
{SANDPOINT BLACKBIRD 8809

S A V HARVESTOR 0338  
S A V EMBLYNETTE 5483  
CONNEALY ONWARD  
RIVERBEND BLACKBIRD 4301

Birth Wt.  
86  
Adj. WW  
765

HD 50K

{RAFTER Q FA 016H  
TRASK LASSIE 565  
{TRASK LASSIE 937

S A V FINAL ANSWER 0035  
LC DAISY 526H  
CONNEALY 044 062  
TRASK LASSIE 541

CED	BW	WW	YW	SC	Milk	DOC	CW	Marb
+3	+4.0	+71	+126	+1.03	+26	+15	+50	+0.19

RE	Fat	\$M	\$W	\$F	\$G	\$B	\$C
+0.77	+0.000	+71	+60	+90	+32	+123	+231

Top 25% in the breed for \$M and \$C.

**81****Trask Entice 3021**

BD: 3/24/23

Reg: 20846972

Tattoo: 3021

{MOGCK ENTICE  
O A ENTICE 120  
{O A PALOMA 1319

SYDGEN ENHANCE  
MOGCK ERICA 2255  
CONNEALY CONFIDENCE 0100  
O A PRIDE 0641

Birth Wt.  
67  
Adj. WW  
655

HD 50K

{HERBSTER SERVICEMAN 544  
TRASK TORRIE 911  
{TRASK TORRIE 620

HERBSTER SERVICEMAN 364  
CHERRY OF CONANGA 2475  
STEVENSON RAINMAKER 1162  
TRASK TORRIE 804



CED	BW	WW	YW	SC	Milk	DOC	CW	Marb
+2	+2.7	+60	+108	+0.39	+26	+18	+47	+0.72

RE	Fat	\$M	\$W	\$F	\$G	\$B	\$C
+0.70	-0.021	+41	+48	+87	+60	+147	+232

Great cow bull backed by an AWESOME Cow family!

**82****Trask Coalition 3011**

BD: 3/16/23

Reg: 20852065

Tattoo: 3011

{HF SYNDICATE 213Z  
U-2 COALITION 206C  
{U2 ERELITE 109Z

CONNEALY CONSENSUS 7229  
HF MISS BLACKCAP 27R  
YOUNG DALE XCLUSIVE 25X  
U-2 ERELITE 1X

Birth Wt.  
72  
Adj. WW  
695

HD 50K

{STEVENSON ROCKMOUNT 41027  
TRASK TORRIE 798  
{TRASK TORRIE 573

STEVENSON ROCKMOUNT RX933  
STEVENSON LUCKY CHARM 5190  
STEVENSON RAINMAKER 1162  
TRASK TORRIE

CED	BW	WW	YW	SC	Milk	DOC	CW	Marb
+3	+1.1	+55	+99	+0.05	+20	+32	+36	+0.64

RE	Fat	\$M	\$W	\$F	\$G	\$B	\$C
+0.72	-0.004	+54	+45	+85	+55	+140	+236

Great cow bull here! Ratioed 106 at 205, 103 at 365. Top 3% of the breed in docility. Top 10% for claw and angle.

**83****Trask Spur 3044**

BD: 4/28/23

Reg: 20853618

Tattoo: 3044

{VERMILION SPUR 8024  
WEBO SPUR 1165  
{WEBO EVER ERICA 888

CONNEALY SPUR  
VERMILION LASS 2081  
MCD ABSOLUTE 640  
EVER ERICA 756

Birth Wt.  
70  
Adj. WW  
640

HD 50K

{STEVENSON ROCKMOUNT 50054  
TRASK EMMA 971  
{TRASK EMMA 793

STEVENSON ROCKMOUNT RX933  
STEVENSON JOYCE 3310  
S SUMMIT 956  
TRASK EMMA



CED	BW	WW	YW	SC	Milk	DOC	CW	Marb
+12	-1.4	+49	+90	+1.70	+31	+20	+37	+0.78

RE	Fat	\$M	\$W	\$F	\$G	\$B	\$C
+0.42	+0.010	+74	+58	+82	+57	+139	+254

Top 10% in the breed for CED, BW, and SC.

**84****Trask Full House 2011**

BD: 3/19/22

Reg: 20601276

Tattoo: 2011

{YON FULL FORCE C398  
WR FULL HOUSE  
{WR RR MISS 342-036

YON FUTURE FORCE Z77  
YON SARAH A100  
RITO REVENUE 5M2 OF 2536 PRE  
WR PROTEGE MISS 036 OF 7102

Birth Wt.  
74  
Adj. WW  
708

HD 50K

{HERBSTER SERVICEMAN 544  
TRASK RACHEL 858  
{TRASK RACHEL

HERBSTER SERVICEMAN 364  
CHERRY OF CONANGA 2475  
MOGCK SURE SHOT  
TRASK RACHEL 818



CED	BW	WW	YW	SC	Milk	DOC	CW	Marb
+14	+1.3	+57	+108	+0.45	+27	+24	+53	+1.18

RE	Fat	\$M	\$W	\$F	\$G	\$B	\$C
+0.54	+0.065	+76	+57	+103	+74	+178	+307

Actual weight 742 pounds at 227 days. Ratioed 111 at 205. Top 10% in the breed for \$C. Top 15% \$B and \$G.

**85****Trask Justified 2025**

BD: 3/31/22

Reg: 20584177

Tattoo: 2025

{KG JUSTIFIED 3023  
D U DEFENDER 032  
{D U QUEEN 636

HD 50K

{RITO 1W22 OF RITA 5W17 9M25  
TRASK TILLIE 735  
{TRASK TILLIE 653

CONNEALY JUDGMENT  
KG MISS MAGIC 1443  
S A V RESOURCE 1441  
D U QUEEN 61S

RITO 9M25 OF RITA 5F56 PRED  
RITA 5W17 OF RITA 3B7 2 878  
G A R ENHANCER 5365  
TRASK TILLIE 901

Birth Wt.  
67  
Adj. WW  
620



CED	BW	WW	YW	SC	Milk	DOC	CW	Marb
+6	+0.9	+73	+121	+0.75	+21	+17	+42	+0.67

RE	Fat	\$M	\$W	\$F	\$G	\$B	\$C
+0.63	-0.012	+68	+67	+80	+56	+136	+244

These are our first calves from Defender. He was our selection from MT Rushmore Angus sale a couple years back. They certainly look the part and did very well. They are all clean up calves running up against the A.I. sires calves born earlier. This bull gained 3.82 pounds on test.

**87****Trask Power Play 2035**

BD: 3/24/22

Reg: 20585082

Tattoo: 2035

{BASIN PAYWEIGHT 1682  
V A R POWER PLAY 7018  
{SANDPOINT BLACKBIRD 8809

HD 50K

{STEVENS ON RAINMAKER 1162  
TRASK TORRIE 616  
{TRASK TORRIE 915

BASIN PAYWEIGHT 0065  
21AR O LASS 7017  
CONNEALY ONWARD  
RIVERBEND BLACKBIRD 4301

BASIN RAINMAKER P175  
BASIN JOY 204U  
G A R NEW DESIGN 5050  
TRASK TORRIE 213

Birth Wt.  
72  
Adj. WW  
572

CED	BW	WW	YW	SC	Milk	DOC	CW	Marb
+8	+1.4	+59	+101	+0.25	+23	+21	+31	+0.47

RE	Fat	\$M	\$W	\$F	\$G	\$B	\$C
+0.46	+0.036	+63	+59	+74	+39	+113	+210

Out of a real easy keeping perfect uddered Rainmaker daughter. Should raise some real nice replacement females.

**89****Trask Rockmount 2058**

BD: 3/31/22

Reg: 20583296

Tattoo: 2058

{STEVENS ON ROCKMOUNT RX933  
STEVENS ON ROCKMOUNT 50054  
{STEVENS ON JOYCE 3310

HD 50K

{CONNEALY CONSENSUS 578B  
TRASK MACKENZIE 407  
{TRASK MACKENZIE 938

MCC DAYBREAK  
FSHK PRIDE 180  
V D A R REALLY WINDY 4097  
STEVENS ON JOYCE 9414

CONNEALY CONSENSUS  
POWSA OF CONANGA 687 7567  
CONNEALY 044 062  
TRASK MACKENZIE 755

Birth Wt.  
65  
Adj. WW  
609

CED	BW	WW	YW	SC	Milk	DOC	CW	Marb
+11	-1.2	+50	+87	-0.24	+26	+27	+36	+0.46

RE	Fat	\$M	\$W	\$F	\$G	\$B	\$C
+0.78	+0.011	+82	+57	+86	+45	+132	+253

Top 15% of the breed for CED, Top 10% for BW. Top 3% for DMI. Top 20% for CEM. Top 10% for \$EN. Top 15% for docility. Top 20% for feet. Top 10% for \$M. If you like easy keeping moderate framed females, take a look here.

**86****Trask Justified 2031**

BD: 3/31/22

Reg: 20584178

Tattoo: 2031

{KG JUSTIFIED 3023  
D U DEFENDER 032  
{D U QUEEN 636

HD 50K

{WILKS WAYLON 185  
TRASK PRIDE 7003  
{TRASK PRIDE 444

CONNEALY JUDGMENT  
KG MISS MAGIC 1443  
S A V RESOURCE 1441  
D U QUEEN 61S

BALDRIDGE WAYLON W34  
WILKS INF 77R EMPRESS 74  
RITO 12E7 OF 5F56 RITO 5M2  
TRASK PRIDE 624

Birth Wt.  
71  
Adj. WW  
588

CED	BW	WW	YW	SC	Milk	DOC	CW	Marb
+7	+2.7	+68	+124	+1.71	+28	+19	+40	+0.71

RE	Fat	\$M	\$W	\$F	\$G	\$B	\$C
+0.45	+0.005	+71	+65	+82	+54	+136	+247

Ratioed 107 on test. Big scrotal EPD bull here that will moderate mature frame size.

**88****Trask Increase 2053**

BD: 3/31/22

Reg: 20583293

Tattoo: 2053

{S A V INTERNATIONAL 2020  
HERBSTER INCREASE 624  
{SANDPOINT BLACKBIRD 8809

HD 50K

{RAFTER Q FA 016H  
TRASK LASSIE 565  
{TRASK LASSIE 937

S A V HARVESTOR 0338  
S A V EMBLYNETTE 5483  
CONNEALY ONWARD  
RIVERBEND BLACKBIRD 4301

S A V FINAL ANSWER 0035  
LC DAISY 526H  
CONNEALY 044 062  
TRASK LASSIE 541

Birth Wt.  
88  
Adj. WW  
606

CED	BW	WW	YW	SC	Milk	DOC	CW	Marb
-5	+5.2	+75	+125	+1.28	+19	+27	+55	-0.05

RE	Fat	\$M	\$W	\$F	\$G	\$B	\$C
+0.81	-0.003	+62	+54	+102	+21	+123	+222

Ratioed 102 at Yearling, and 111 on test. Top 20% of the breed for WW. Top 30% for YW. Top 15% for docility.

**90****Trask Bravo 2060**

BD: 3/24/22

Reg: 20583935

Tattoo: 2060

{COLEMAN CHARLO 0256  
COLEMAN BRAVO 6313  
{COLEMAN DONNA 714

HD 50K

{RITO 1W22 OF RITA 5W17 9M25  
TRASK MS BLACKWOOD 419  
{TRASK MS BLACKWOOD 771

O C C PAXTON 730P  
BOHI ABIGALE 6014  
CONNEALY ONWARD  
COLEMAN DONNA 386

RITO 9M25 OF RITA 5F56 PRED  
RITA 5W17 OF RITA 3B7 2 878  
SUA 303  
TRASK MS BLACKWOOD 744

Birth Wt.  
70  
Adj. WW  
570

CED	BW	WW	YW	SC	Milk	DOC	CW	Marb
+5	+0.7	+53	+98	+0.19	+33	+20	+39	+0.28

RE	Fat	\$M	\$W	\$F	\$G	\$B	\$C
+0.65	-0.006	+73	+60	+87	+36	+122	+231

Ratioed 113 on test. Out of a real nice 1W22 daughter. Her production record is 6 @ 112 at weaning and 5 @ 110 at yearling. Should work well about anywhere.



**91****Trask Bravo 2061**

BD: 3/31/22

Reg: 20583933

Tattoo: 2061

{COLEMAN CHARLO 0256  
COLEMAN BRAVO 6313  
{COLEMAN DONNA 714

HD 50K

{STEVENS RAINMAKER 1162  
TRASK PROUD LASSIE 429  
{TRASK PROUD LASSIE 128

O C C PAXTON 730P  
BOHI ABIGALE 6014  
CONNEALY ONWARD  
COLEMAN DONNA 386

BASIN RAINMAKER P175  
BASIN JOY 204U  
CONNEALY ANSWER 7304  
TRASK PROUD LASSIE 843

Birth Wt.  
73  
Adj. WW  
601

CED	BW	WW	YW	SC	Milk	DOC	CW	Marb
+6	+0.5	+59	+94	+0.73	+24	+29	+27	+0.23

RE	Fat	\$M	\$W	\$F	\$G	\$B	\$C
+0.43	+0.010	+92	+65	+64	+29	+93	+213

Top 10% of the Breed for DMI. Top 10% for \$EN. Top 10% for docility, Top 2% for \$M. You will love the Bravo daughters.

**93****Trask Rainfall 2078**

BD: 2/4/22

Reg: 20584194

Tattoo: 2078

{S A V RAINFALL 6846  
MOHNEN RAINFALL 6369  
{MOHNEN JILT 1655

HD 50K

{WILKS WAYLON 81  
TRASK PROUD LASSIE 009  
{TRASK PROUD LASSIE 506

COLEMAN CHARLO 0256  
S A V BLACKCAP MAY 4136  
WULFFS EXT 6106  
MOHNEN JILT 910

BALDRIDGE WAYLON W34  
WILKS INF 77R ROSEBUD 106  
RITO 12E7 OF 5F56 RITO 5M2  
TRASK PROUD LASSIE

Birth Wt.  
65  
Adj. WW  
645

CED	BW	WW	YW	SC	Milk	DOC	CW	Marb
+3	+3.5	+63	+103	+0.30	+23	+26	+34	+0.72

RE	Fat	\$M	\$W	\$F	\$G	\$B	\$C
+0.47	+0.028	+70	+56	+71	+53	+124	+231

Top 30% for \$EN, Top 20% of the Angus breed for docility, Top 15% for claw. Should make moderate framed easy fleshing daughters, and great set of feeding steers.

**95****Trask Powerpoint 2114**

BD: 4/2/22

Reg: 20583316

Tattoo: 2114

{S POWERPOINT WS 5503  
S POWERPOINT 866  
{S ELITE 3163

HD 50K

{S WHITLOCK 179  
TRASK ANITA 843  
{TRASK ANITA 641

TEHAMA REVERE  
S QUEEN ESSA 248  
S SUMMIT 956  
S ELITE 152

S CHISUM 6175  
S PRIDE ANNA 709  
MOGCK SURE SHOT  
TRASK ANITA 958

Birth Wt.  
65  
Adj. WW  
590

CED	BW	WW	YW	SC	Milk	DOC	CW	Marb
+13	-0.5	+62	+117	+1.00	+20	+6	+43	+0.29

RE	Fat	\$M	\$W	\$F	\$G	\$B	\$C
+0.28	+0.025	+55	+53	+77	+29	+106	+192

Ratioed 104 @ YW, 119 on Test. Top 10% of the Angus Breed for CED, Top 20% for BW. Top 10% for CEM.

**92****Trask Bravo 2064**

BD: 3/26/22

Reg: 20583919

Tattoo: 2064

{COLEMAN CHARLO 0256  
COLEMAN BRAVO 6313  
{COLEMAN DONNA 714

HD 50K

{RITO 12E7 OF 5F56 RITO 5M2  
TRASK KATIE 443  
{TRASK KATIE 622

O C C PAXTON 730P  
BOHI ABIGALE 6014  
CONNEALY ONWARD  
COLEMAN DONNA 386

RITO REVENUE 5M2 OF 2536 PRE  
RITA 5F56 OF 1198 FD  
SPEAR U RANCH HAND 8303  
TRASK KATIE 138

Birth Wt.  
69  
Adj. WW  
573

CED	BW	WW	YW	SC	Milk	DOC	CW	Marb
+12	+1.3	+49	+92	+1.66	+28	+28	+28	+0.21

RE	Fat	\$M	\$W	\$F	\$G	\$B	\$C
+0.56	-0.010	+90	+54	+69	+31	+100	+220

Ratioed 108 on test. Top 10% of the Angus Breed for CED. Top 20% for CEM. Top 10% for \$EN. Top 10% for both Docility and Feet. Top 3% for \$M.

**94****Trask Tahoe 2086**

BD: 2/1/22

Reg: 20584196

Tattoo: 2086

{S A V RAINFALL 6846  
MOHNEN RAINFALL 6379  
{MOHNEN JILT 1655

HD 50K

{S POWERPOINT WS 5503  
TRASK PROUD LASSE 026  
{TRAS PROUD LASSE 821

COLEMAN CHARLO 0256  
S A V BLACKCAP MAY 4136  
WULFFS EXT 6106  
MOHNEN JILT 910

TEHAMA REVERE  
S QUEEN ESSA 248  
HERBSTER SERVICEMAN 544  
TRASK PROUD LASSIE 128

Birth Wt.  
72  
Adj. WW  
633

CED	BW	WW	YW	SC	Milk	DOC	CW	Marb
+11	-0.6	+55	+101	+0.40	+36	+16	+38	+0.42

RE	Fat	\$M	\$W	\$F	\$G	\$B	\$C
+0.59	+0.032	+89	+67	+77	+39	+115	+238

Ratioed 106 on test. Top 15% of the Angus Breed for both CED, BW. Top 3% for HP, Top 10% for CEM, Top 25% for \$EN, Top 15% , Top 4% for \$M.

**96****Trask Rockmount 2189**

BD: 3/31/22

Reg: 20583282

Tattoo: 2189

{STEVENS ROCKMOUNT RX933  
STEVENS ROCKMOUNT 41449  
{STEVENS CLOVA PRIDE X792

HD 50K

{WILKS WAYLON 185  
TRASK MS RACHEL 715  
{TRASK MS RACHEL

MCC DAYBREAK  
FSHK PRIDE 180  
STEVENSONS MONEY MAKER 753  
STEVENS CLOVA PRIDE T216

BALDRIDGE WAYLON W34  
WILKS INF 77R EMPRESS 74  
G A R NEW DESIGN 5050  
TRASK MS RACHEL 566

Birth Wt.  
60  
Adj. WW  
635

CED	BW	WW	YW	SC	Milk	DOC	CW	Marb
+11	-0.9	+45	+77	+0.16	+27	+14	+31	+0.20

RE	Fat	\$M	\$W	\$F	\$G	\$B	\$C
+0.70	+0.072	+58	+53	+77	+26	+103	+192

Top 15% of the breed for both CED, BW. Top 10% for CEM. Top 10% for \$EN. The Rockmount females we have are just wonderful moderate framed cows with very nice udders.



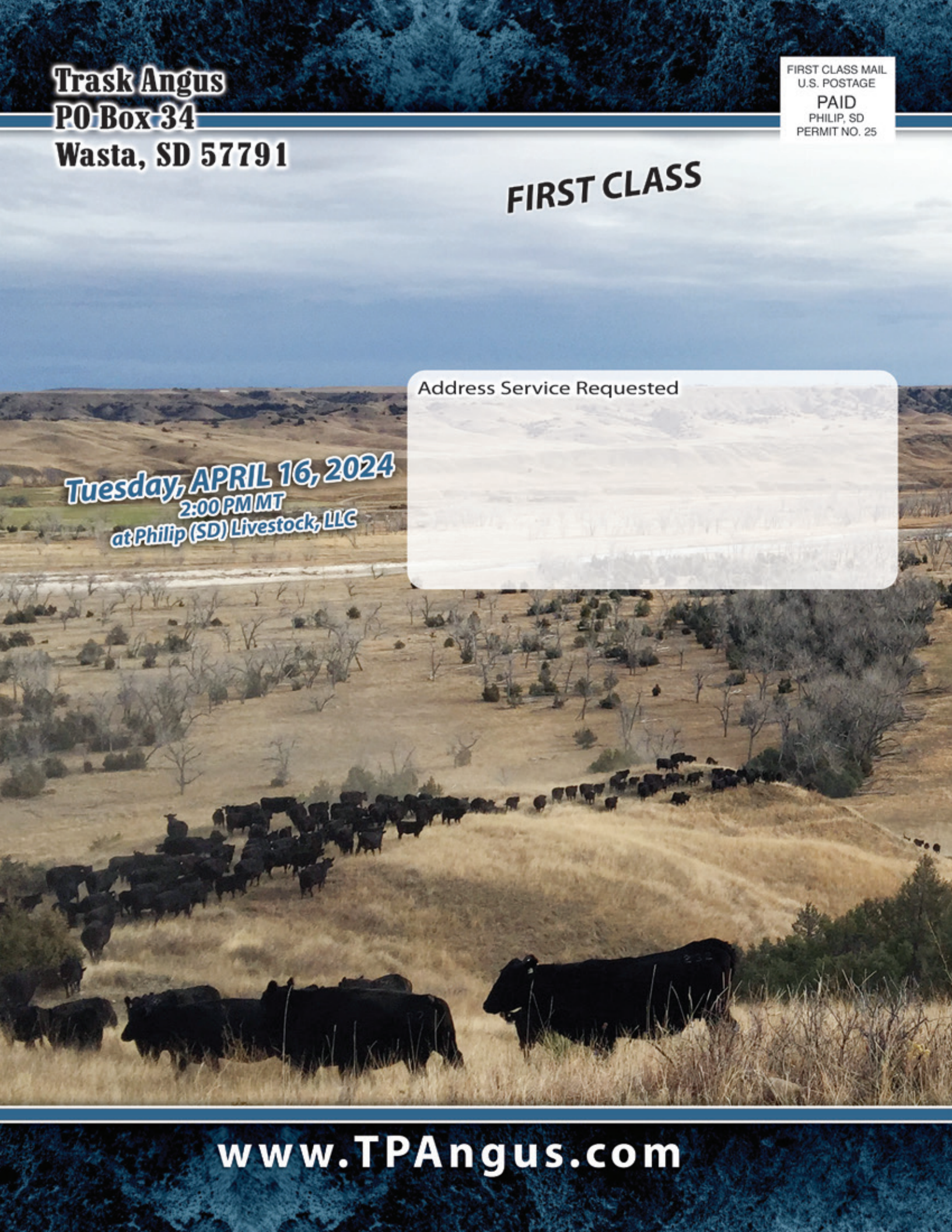
**Trask Angus**  
**PO Box 34**  
**Wasta, SD 57791**

FIRST CLASS MAIL  
U.S. POSTAGE  
**PAID**  
PHILIP, SD  
PERMIT NO. 25

**FIRST CLASS**

Address Service Requested

**Tuesday, APRIL 16, 2024**  
**2:00 PM MT**  
**at Philip (SD) Livestock, LLC**



**www.TPAngus.com**